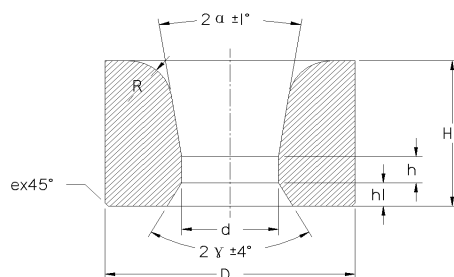
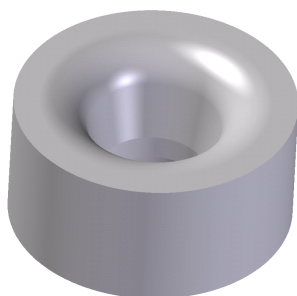


**W型 拉制黑色金属线材模坯** Type W Carbide drawing dies for drawing metal wire


新型号 New Type	原型号 Old Type	Dimension (mm) 基本尺寸					Reference dimension(mm) 参考尺寸					
		D	H	d	2α	2γ	h	h <sub>1</sub>	R	D <sub>1</sub>	e	ε
W-0060412-0.2		6	4	0.2	12°	90°	≤0.1	0.8	2.8	4.2	0.8	45°
W-0060412-0.2 5		6	4	0.25	12°	90°	≤0.1	0.8	2.8	4.2	0.8	45°
W-0060412-0.3		6	4	0.3	12°	90°	≤0.1	0.8	2.8	4.2	0.8	45°
W-0060412-0.3 5		6	4	0.35	12°	90°	≤0.1	0.8	2.8	4.2	0.8	45°
W-0060412-0.4		6	4	0.4	12°	90°	≤0.1	0.8	2.8	4.2	0.8	45°
W-0080612-0.5		8	6	0.5	12°	90°	≤0.1	1.0	4.5	5.8	1.0	45°
W-0080612-0.6		8	6	0.6	12°	90°	≤0.1	1.0	4.3	5.8	1.0	45°
W-0080612-0.7		8	6	0.7	12°	90°	≤0.1	1.0	4.3	5.9	1.0	45°
W-0080612-0.8		8	6	0.8	12°	90°	≤0.1	1.0	4.2	5.9	1.0	45°
W-0080612-0.9		8	6	0.9	12°	90°	≤0.1	1.0	4.2	6.0	1.0	45°
W-0080612-1.0		8	6	1.0	12°	90°	≤0.1	1.0	4.0	6.0	1.0	45°
W-0090612-0.5		9	6	0.3	12°	90°	≤0.1	1.0	4.3	6.6	1.2	45°
W-0090612-0.6		9	6	0.6	12°	90°	≤0.1	1.0	4.2	6.6	1.2	45°
W-0090612-0.7		9	6	0.7	12°	90°	≤0.1	1.0	4.2	6.8	1.2	45°
W-0090612-0.8		9	6	0.8	12°	90°	≤0.1	1.0	4.2	6.8	1.2	45°
W-0090612-0.9		9	6	0.9	12°	90°	≤0.1	1.0	4.2	6.8	1.2	45°
W-0090612-1.0		9	6	1.0	12°	90°	≤0.1	1.0	4.0	7.0	1.2	45°
W-0090612-1.1		9	6	1.1	12°	90°	≤0.1	1.0	4.0	7.0	1.2	45°
W-0090612-1.2		9	6	1.2	12°	90°	≤0.1	1.0	4.0	7.0	1.2	45°
W-0090612-1.3		9	6	1.3	12°	90°	≤0.1	1.0	4.0	7.0	1.2	45°
W-0090612-1.4		9	6	1.4	12°	90°	≤0.1	1.0	4.0	7.0	1.2	45°
W-0090612-1.5		9	6	1.5	12°	90°	≤0.1	1.0	4.0	7.0	1.2	45°
W-0120612-0.2	W103-0.2	12	6	0.2	12°	60°	≤0.1	0.8	5.2	8.5	1.2	45°
W-0120812-0.2 5	W103-0.25	12	8	0.25	12°	60°	≤0.1	0.8	5.2	8.5	1.2	45°
W-0120812-0.3	W103-0.3	12	8	0.3	12°	60°	≤0.1	0.8	5.2	8.5	1.2	45°
W-0120812-0.4	W103-0.4	12	8	0.4	12°	60°	≤0.1	0.8	5.2	8.5	1.2	45°
W-0120814-0.6	W103-0.6	12	8	0.6	14°	60°	1.5	0.8	4.1	4.3	1.5	45°
W-0120814-0.7		12	8	0.7	14°	60°	1.5	0.8	4.1	4.3	1.5	45°

W-0120814-0.8	W103-0.80	12	8	0.8	14°	60°	1.5	0.8	6.0	8.2	1.5	45°
W-0120814-0.9		12	8	0.9	14°	60°	1.5	0.8	6.0	8.2	1.5	45°
W-0120814-1.0	W103-1.0	12	8	1.0	14°	60°	1.5	0.8	6.0	8.2	1.5	45°
W-0120814-1.1		12	8	1.1	14°	60°	1.5	0.8	6.0	8.6	1.5	45°
W-0120814-1.2		12	8	1.2	14°	60°	1.5	0.8	6.0	8.6	1.5	45°
W-0120814-1.3	W103-1.3	12	8	1.3	14°	60°	1.0	1.0	6.0	9.0	1.5	45°
W-0120814-1.4		12	8	1.4	14°	60°	1.0	1.0	6.0	9.0	1.5	45°
W-0120814-1.5		12	8	1.5	14°	60°	1.0	1.0	6.0	9.0	1.5	45°
W-0120814-1.6	W103-1.6	12	8	1.6	14°	60°	1.2	1.0	5.4	9.0	1.5	45°
W-0151014-1.0	W104-1.0	15	10	1.0	14°	60°	1.5	1.2	7.0	8.2	1.2	45°
W-0151014-1.1		15	10	1.1	14°	60°	1.5	1.2	7.0	8.2	1.2	45°
W-0151014-1.2	W104-1.2	15	10	1.2	14°	60°	1.5	1.2	7.0	8.2	1.5	45°
W-0151014-1.3		15	10	1.3	14°	60°	1.5	1.2	7.0	8.2	1.2	45°
W-0151014-1.4	W104-1.4	15	10	1.4	14°	60°	1.5	1.2	7.0	8.2	1.5	45°
W-0151014-1.5		15	10	1.5	14°	60°	1.5	1.2	7.0	8.6	1.2	45°
W-0151014-1.6	W104-1.6	15	10	1.6	14°	60°	1.5	1.2	7.0	9.0	1.2	45°
W-0151014-1.7		15	10	1.7	14°	60°	1.5	1.2	7.0	9.0	1.2	45°
W-0151014-1.8	LW104-1.8	15	10	1.8	14°	60°	1.1	1.5	6.0	12.0	1.5	45°
W-0151014-1.9		15	10	1.9	14°	60°	1.5	1.2	7.0	9.0	1.2	45°
W-0151014-2.0	LW104-2.0	15	10	2.0	14°	60°	1.1	1.5	6.0	12.0	1.5	45°
W-0151014-2.1		15	10	2.1	14°	60°	1.5	1.2	7.0	11.0	1.2	45°
W-0151014-2.2	LW104-2.2	15	10	2.2	14°	60°	1.1	1.5	6.0	12.0	1.5	45°
W-0151014-2.3	W104-2.3	15	10	2.3	14°	60°	1.1	1.0	6.0	12.0	1.5	45°
W-0151014-2.4	LW104-2.4	15	10	2.4	14°	60°	1.1	1.5	6.0	12.0	1.5	45°
W-0151014-2.5	W104-2.5	15	10	2.5	14°	60°	1.1	1.2	6.0	12.0	1.5	45°
W-0151014-2.6	LW104-2.6	15	10	2.6	14°	60°	1.4	1.5	6.0	12.0	1.5	45°
W-0151014-2.7		15	10	2.7	14°	60°	1.4	1.2	6.0	12.0	1.5	45°
W-0151014-2.8	LW104-2.8	15	10	2.8	14°	60°	1.4	1.5	6.0	12.0	1.5	45°
W-0151014-2.9		15	10	2.9	14°	60°	1.4	1.2	6.0	12.0	1.5	45°
W-0151014-3.0	LW104-3.0	15	10	3.0	14°	60°	1.4	1.8	6.0	12.0	1.5	45°
W-0151014-3.2	W104-3.2	15	10	3.2	14°	60°	1.5	1.2	6.0	12.0	1.5	45°
W-0151014-3.4	LW104-3.4	15	10	3.4	14°	60°	1.6	1.8	6.0	12.0	1.5	45°
W-0151014-3.5	W104-3.5	15	10	3.5	14°	60°	1.6	1.8	6.0	12.0	1.5	45°
W-0151014-3.6	LW104-3.6	15	10	3.6	14°	60°	1.6	1.8	6.0	12.0	1.5	45°
W-0151014-3.8	LW104-3.8	15	10	3.8	14°	60°	1.6	1.8	6.0	12.0	1.5	45°
W-0191314-1.2 H		19	13.5	1.2	14°	60°	2.0	1.6	9.0	13.0	1.5	45°
W-0191314-1.5 H		19	13.5	1.5	14°	60°	2.0	1.6	9.0	13.0	1.5	45°
W-0191314-1.8 H		19	13.5	1.8	14°	60°	2.0	1.6	9.0	13.0	1.5	45°

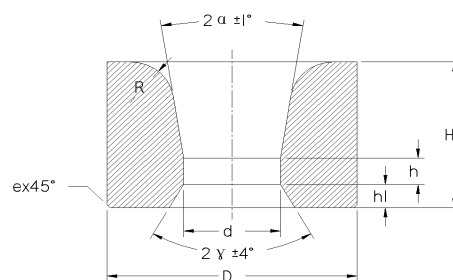
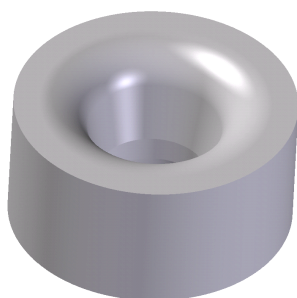
W-0191314-2.0 H		19	13.5	2.0	14°	60°	2.0	1.6	9.0	13. 0	1.5	45°
W-0191314-2.3 H		19	13.5	2.3	14°	60°	2.0	1.6	9.0	13. 0	1.5	45°
W-0191314-2.5 H		19	13.5	2.5	14°	60°	2.0	1.6	9.0	13. 0	1.5	45°
W-0191314-2.8 H		19	13.5	2.8	14°	60°	2.0	1.6	9.0	16. 0	1.5	45°
W-0191314-3.0 H		19	13.5	3	14°	60°	2.0	1.6	9.0	16. 0	1.5	45°
W-0201414-1.1	W105-1.1	20	14	1.1	14°	60°	2.0	1.6	9.0	13.2	1.5	45°
W-0201414-1.2	W105-1.2	20	14	1.2	14°	60°	2.0	1.6	9.0	13.2	1.5	45°
W-0201414-1.3		20	14	1.3	14°	60°	2.0	1.6	9.0	13.2	1.5	45°
W-0201414-1.4	W105-1.4	20	14	1.4	14°	60°	2.0	1.6	9.0	13.2	1.5	45°
W-0201414-1.5		20	14	1.5	14°	60°	2.0	1.6	9.0	13.2	1.5	45°
W-0201414-1.6		20	14	1.6	14°	60°	2.0	1.6	9.0	13.2	1.5	45°
W-0201414-1.7	W105-1.1	20	14	1.7	14°	60°	2.0	1.6	9.0	13.2	1.5	45°
W-0201414-1.8		20	14	1.8	14°	60°	2.0	1.6	9.0	13.2	1.5	45°
W-0201414-1.9		20	14	1.9	14°	60°	2.0	1.6	9.0	13.2	1.5	45°
W-0201414-2.0	W105-2.0	20	14	2.0	14°	60°	2.0	1.6	9.0	13.2	1.5	45°
W-0201414-2.1		20	14	2.1	14°	60°	2.0	1.6	9.0	13.2	1.5	45°
W-0201414-2.2		20	14	2.2	14°	60°	2.0	1.6	9.0	13.2	1.5	45°
W-0201414-2.3	W105-2.3	20	14	2.3	14°	60°	2.0	1.6	9.0	13.2	1.5	45°
W-0201414-2.4		20	14	2.4	14°	60°	2.0	1.6	9.0	13.2	1.5	45°
W-0201414-2.5		20	14	2.5	14°	60°	2.0	1.6	9.0	13.2	1.5	45°
W-0201414-2.6		20	14	2.6	14°	60°	2.0	1.6	9.0	13.2	1.5	45°
W-0201414-2.7		20	14	2.7	14°	60°	2.0	1.6	9.0	13.2	1.5	45°
W-0201414-2.8		20	14	2.8	14°	60°	2.0	1.6	9.0	13.2	1.5	45°
W-0201414-2.9		20	14	2.9	14°	60°	2.0	1.6	9.0	13.2	1.5	45°
W-0201414-3.0	W105-3.0	20	14	3.0	14°	60°	2.0	1.6	9.0	13.2	1.5	45°
W-0201414-3.2		20	14	3.2	14°	60°	2.0	1.6	9.0	13.2	1.5	45°
W-0201414-3.4	W105-3.4	20	14	3.4	14°	60°	2.0	1.6	9.0	13.2	1.5	45°
W-0201414-3.6	W105-3.6	20	14	3.6	14°	60°	2.0	1.6	9.0	13.2	1.5	45°
W-0201414-3.8	LW105-3.8	20	14	3.8	14°	60°	1.5	2.0	9.0	15.0	1.1	45°
W-0201414-4.0	LW105-4.0	20	14	4.0	14°	60°	1.6	2.0	9.0	15.0	1.1	45°
W-0201414-4.2	LW105-4.2	20	14	4.2	14°	60°	1.7	2.0	9.0	15.0	1.1	45°
W-0201416-4.4	LW105-4.4	20	14	4.4	16°	60°	1.8	2.5	8.0	17.0	1.1	45°
W-0201416-4.6	LW105-4.6	20	14	4.6	16°	60°	1.9	2.5	8.0	17.0	1.1	45°
W-0201416-4.8	LW105-4.8	20	14	4.7	16°	60°	1.9	2.5	8.0	17.0	1.1	45°
W-0201416-5.0	LW105-5.0	20	14	5.0	16°	60°	2.1	2.5	8.0	17.0	1.1	45°
W-0201416-5.3		20	14	5.3	16°	60°	2.4	1.0	5.6	17.0	2.0	45°
W-0201416-5.5	LW105-5.5	20	14	5.5	16°	60°	2.2	2.5	8.0	17.0	1.1	45°
W-0201416-5.7	LW105-5.7	20	14	5.7	16°	60°	2.3	2.5	8.0	17.0	1.1	45°

W-0241614-3.7 H		24	16.5	3.7	14°	60°	3.2	2.0	9.0	20. 0	1.5	45°
W-0241614-4.2 H		24	16.5	4.2	14°	60°	3.2	2.0	9.0	20. 0	1.5	45°
W-0241614-5.3 H		24	16.5	5.3	14°	60°	3.2	2.0	12. 0	20. 0	1.5	45°
W-0241614-5.7 H		24	16.5	5.7	14°	60°	3.2	2.0	12. 0	20. 0	1.5	45°
W-0241614-6.0 H		24	16.5	6.0	14°	60°	3.2	2.0	12. 0	20. 0	1.5	45°
W-0241614-6.5 H		24	16.5	6.5	14°	60°	3.2	2.0	12. 0	20. 0	1.5	45°
W-0241614-6.7 H		24	16.5	6.7	14°	60°	3.2	2.0	12. 0	20. 0	1.5	45°
W-0241614-7.0 H		24	16.5	7.0	14°	60°	3.2	2.0	12. 0	20. 0	1.5	45°
W-0241614-7.3 H		24	16.5	7.3	14°	60°	3.2	2.0	12. 0	20. 0	1.5	45°
W-0241614-7.5 H		24	16.5	7.5	14°	60°	3.2	2.0	12. 0	20. 0	1.5	45°
W-0241614-7.7 H		24	16.5	7.7	14°	60°	3.2	2.0	12. 0	20. 0	1.5	45°
W-0241614-8.0 H		24	16.5	8.0	14°	60°	3.2	2.0	12. 0	20. 0	1.5	45°
W-0241614-8.5 H		24	16.5	8.5	14°	60°	3.2	2.0	12. 0	20. 0	1.5	45°
W-0251814-3.0	W106-3.0	25	18	3.0	14°	60°	3.2	2.0	12.0	17.5	2.0	45°
W-0251814-3.2		25	18	3.2	14°	60°	3.2	2.0	12.0	17.5	2.0	45°
W-0251814-3.4		25	18	3.4	14°	60°	3.2	2.0	12.0	17.5	2.0	45°
W-0251814-3.6		25	18	3.6	14°	60°	3.2	2.0	12.0	17.5	2.0	45°
W-0251814-3.8		25	18	3.8	14°	60°	3.2	2.0	12.0	17.5	2.0	45°
W-0251814-4.0		25	18	4.0	14°	60°	3.2	2.0	12.0	17.5	2.0	45°
W-0251814-4.2	W106-4.2	25	18	4.2	14°	60°	3.2	2.0	12.0	17.5	2.0	45°
W-0251814-4.5		25	18	4.5	14°	60°	3.2	2.0	12.0	17.5	2.0	45°
W-0251814-4.8		25	18	4.8	14°	60°	3.2	2.0	12.0	17.5	2.0	45°
W-0251814-5.1		25	18	5.1	14°	60°	3.2	2.0	12.0	17.5	2.0	45°
W-0251814-5.4		25	18	5.4	14°	60°	3.2	2.0	12.0	17.5	2.0	45°
W-0251814-5.5	W106-5.5	25	18	5.5	14°	60°	3.2	2.0	12.0	17.5	2.0	45°
W-0251814-5.8		25	18	5.8	14°	60°	3.0	2.5	12.0	18.0	2.0	45°
W-0251814-6.0	LW106-6.0	25	18	6.0	14°	60°	3.2	2.0	12.0	17.5	2.0	45°
W-0251816-6.8		25	18	6.8	16°	60°	3.1	2.3	12.0	18.0	2.0	45°
W-0251816-7.3	W106-7.3	25	18	7.3	16°	60°	3.2	2.0	12.0	17.5	2.0	45°
W-0251816-7.7	W106-7.7	25	18	7.7	16°	60°	3.2	2.0	12.0	17.5	2.0	45°

W-0251816-9.0	LW106-9.0	25	18	9.0	16°	60°	3.2	2.0	12.0	17.5	2.0	45°
W-0302216-7.7	W107-7.7	30	22	7.7	16°	60°	4.5	2.0	14.5	20.5	2.0	45°
W-0302216-9.0	W107-9.0	30	22	9.0	16°	60°	3.4	2.9	14.6	26.0	2.0	45°
W-0302216-10.0	W107-10.0	30	22	10.0	16°	60°	3.6	2.7	14.4	26.0	2.0	45°
W-0302216-10.5	W107-10.5	30	22	10.5	16°	60°	3.6	2.7	14.4	26.0	2.0	45°
W-0302216-11.0	W107-11.0	30	22	11.0	16°	60°	3.7	2.6	14.3	26.0	2.0	45°
W-0352516-6.7	W108-6.7	35	25	6.7	16°	60°	4.5	2.0	14.5	23.5	2.0	45°
W-0352516-7.0		35	25	7.0	16°	60°	2.5	3.5	14.5	25.0	2.0	45°
W-0352516-7.5		35	25	7.5	16°	60°	2.5	3.5	14.5	25.0	2.0	45°
W-0352516-7.7	W108-7.7	35	25	7.7	16°	60°	2.5	3.5	14.0	25.0	3.0	45°
W-0352516-8.2	W108-8.2	35	25	8.2	16°	60°	2.5	3.5	14.0	25.0	3.0	45°
W-0352516-8.7	W108-8.7	35	25	8.7	16°	60°	2.5	3.5	14.0	25.0	3.0	45°
W-0352516-9.3	W108-9.3	35	25	9.3	16°	60°	2.8	3.5	14.0	25.0	3.0	45°
W-0352516-9.8	W108-9.8	35	25	9.8	16°	60°	2.8	3.5	14.0	25.0	3.0	45°
W-0352516-10.0	LW106-10	35	25	10.0	16°	60°	3.0	3.5	14.0	25.0	3.0	45°
W-0352516-10.5	W108-10.5	35	25	10.5	16°	60°	3.2	3.5	14.0	25.0	3.0	45°
W-0352516-11.0	W108-11	35	25	11.0	16°	60°	3.6	3.5	14.0	25.0	3.0	45°
W-0352516-11.5	W108-11.5	35	25	11.5	16°	60°	3.6	3.5	14.0	25.0	3.0	45°
W-0352516-12.0	LW106-12	35	25	12.0	16°	60°	3.5	3.5	14.0	25.0	3.0	45°
W-0352516-12.5	W108-12.5	35	25	12.5	16°	60°	3.6	3.5	14.0	51.0	3.0	45°
W-0502818-17.7	W110-17.7	50	28	17.7	18°	60°	10.0	5.0	7.0	-	1.5	45°
W-0502824-18.3	W110-18.3	50	28	18.3	24°	60°	7.0	5.0	6.5	-	1.5	45°
W-0532820-25.5		53	28	25.5	20°	60°	6.0	5.0	9.6	-	2.0	45°
W-0532820-26.5		53	28	26.5	20°	60°	6.0	5.0	9.6	-	2.0	45°
W-0532820-27.5		53	28	27.5	20°	60°	6.0	5.0	9.6	-	2.0	45°
W-0532820-28.5		53	28	28.5	20°	60°	6.0	5.0	9.6	-	2.0	45°
W-0573023-24.5		57	30	24.5	23°	60°	6.0	5.0	11.0	-	2.0	45°
W-0573023-26.5		57	30	26.5	23°	60°	6.0	5.0	11.0	-	2.0	45°
W-0573023-28.5		57	30	28.5	23°	60°	6.0	5.0	11.0	-	2.0	45°

W-0573023-25.5		57	30	25.5	23°	60°	6.0	5.0	11.0	-	2.0	45°
W-0573023-27.5		57	30	27.5	23°	60°	6.0	5.0	11.0	-	2.0	45°
W-0573023-29.5		57	30	29.5	23°	60°	6.0	5.0	11.0	-	2.0	45°
W-0583220-30.5		58	32	30.5	20°	60°	7.0	5.0	9.8	51	2.0	45°
W-0583220-31.5		58	32	31.5	20°	60°	7.0	5.0	9.8	51	2.0	45°
W-0583220-32.5		58	32	32.5	20°	60°	7.0	5.0	9.8	51	2.0	45°
W-0583220-33.5		58	32	33.5	20°	60°	7.0	5.0	9.8	48	2.0	45°
W-0583322-24.5	W13-24.5	58	33	24.0	22°	60°	6.0	6.0	14.0	51	3.0	45°

**W1 型** 拉制黑色金属线材模坯 Type W1 Carbide drawing die for drawing metal wires



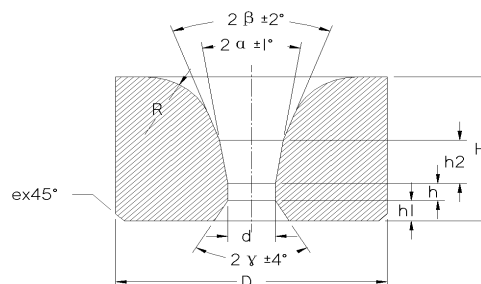
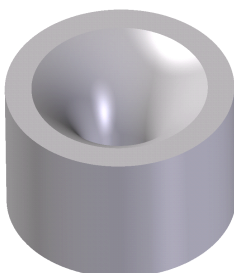
新型号 New Type	原型号 Old Type	Dimension (mm) 基本尺寸						Reference dimension(mm) 参考尺寸				
		D	H	d	2α	2β	2γ	h	h <sub>1</sub>	h <sub>2</sub>	R	E
W1-0120810-0.5	W103 φ 0.5	12	8	0.5	10°	90°	60°	0.3	1.2	2.0	2.0	1.0
W1-0120810-0.8	W103 φ 0.8	12	8	0.8	10°	90°	60°	0.6	1.2	2.3	2.0	1.0
W1-0120810-1.0	W103 φ 1.0	12	8	1.0	10°	90°	60°	0.7	1.6	3.6	2.0	1.0
W1-0120810-1.2	W103 φ 1.2	12	8	1.2	10°	90°	60°	0.8	1.8	3.4	2.0	1.0
W1-0120810-2.0	W103 φ 2.0	12	8	2.0	10°	90°	60°	1.2	1.6	3.6	2.0	1.0
W1-0120810-2.2	W103 φ 2.2	12	8	2.2	10°	90°	60°	1.2	1.6	3.6	2.0	1.0
W1-0120810-2.5	W103 φ 2.5	12	8	2.5	10°	90°	60°	1.2	1.6	3.6	2.0	1.0
W1-0151012-0.8	W104 φ 0.8	15	10	0.8	12°	60°	60°	0.6	2.5	4.2	2.0	1.0

W1-0151012-1.2	W104 $\varnothing$ 1.2	15	10	1.2	12°	60°	60°	1.0	2.0	4.8	2.0	1.0
W1-0151012-1.8	W104 $\varnothing$ 1.8	15	10	1.8	12°	60°	60°	1.2	2.0	4.8	2.0	1.0
W1-0151012-2.6	W104 $\varnothing$ 2.6	15	10	2.6	12°	60°	60°	1.3	2.0	4.5	3.0	1.0
W1-0151012-3.0	W104 $\varnothing$ 3.0	15	10	3.0	12°	60°	60°	1.4	2.0	4.5	3.0	1.0
W1-0201414-1.2	W105 $\varnothing$ 1.2	20	14	1.2	14°	60°	60°	0.8	3.0	6.5	3.0	1.0
W1-0201414-1.4	W105 $\varnothing$ 1.4	20	14	1.4	14°	60°	60°	1.0	3.0	6.5	3.0	1.0
W1-0201414-1.8	W105 $\varnothing$ 1.8	20	14	1.8	14°	60°	60°	1.2	3.0	6.5	3.0	1.0
W1-0201414-2.0	W105 $\varnothing$ 2.0	20	14	2.0	14°	60°	60°	1.4	3.0	6.0	3.0	1.0
W1-0201414-2.2	W105 $\varnothing$ 2.2	20	14	2.2	14°	60°	60°	1.2	3.0	6.0	3.0	1.0
W1-0201414-2.4	W105 $\varnothing$ 2.4	20	14	2.4	14°	60°	60°	1.3	3.0	6.0	3.0	1.0
W1-0201414-3.2	W105 $\varnothing$ 3.2	20	14	3.2	14°	60°	60°	1.6	3.0	6.5	3.0	1.0
W1-0201414-3.4	W105 $\varnothing$ 3.4	20	14	3.4	14°	60°	60°	1.6	3.0	6.5	3.0	1.0
W1-0201414-3.6	W105 $\varnothing$ 3.6	20	14	3.6	14°	60°	60°	1.7	3.0	7.0	3.0	1.0
W1-0201414-3.8	W105 $\varnothing$ 3.8	20	14	3.8	14°	60°	60°	1.9	3.0	7.0	3.0	1.0
W1-0201414-4.0	W105 $\varnothing$ 4.0	20	14	4.0	14°	60°	60°	1.9	3.0	7.0	3.0	1.0
W1-0201414-4.2	W105 $\varnothing$ 4.2	20	14	4.2	14°	60°	60°	1.9	3.0	7.0	3.0	1.0
W1-0201414-4.6	W105 $\varnothing$ 4.6	20	14	4.6	14°	60°	60°	1.9	3.0	7.0	3.0	1.0
W1-0201414-4.8	W105 $\varnothing$ 4.8	20	14	4.8	14°	60°	60°	1.9	3.0	7.0	3.0	1.0
W1-0201414-5.0	W105 $\varnothing$ 5.0	20	14	5.0	14°	60°	60°	2.0	3.0	7.0	3.0	1.0
W1-0201414-5.2	W105 $\varnothing$ 5.2	20	14	5.2	14°	60°	60°	2.0	3.0	7.0	3.0	1.0
W1-0201414-5.5	W105 $\varnothing$ 5.5	20	14	5.5	14°	60°	60°	2.0	3.0	7.0	3.0	1.0



W1-0251814-5.4	W106 $\phi$ 5.4	25	18	5.4	14°	60°	60°	2.0	4.0	7.5	5.0	1.2
W1-0251814-5.6	W106 $\phi$ 5.6	25	18	5.6	14°	60°	60°	2.4	4.0	7.5	5.0	1.2
W1-0251814-6.0	W106 $\phi$ 6.0	25	18	6.0	14°	60°	60°	2.6	4.0	7.5	5.0	1.2
W1-0251814-6.6	W106 $\phi$ 6.6	25	18	6.6	14°	60°	60°	2.6	4.0	7.5	5.0	1.2
W1-0251814-7.0	W106 $\phi$ 7.0	25	18	7.0	14°	60°	60°	2.6	4.0	7.5	5.0	1.2
W1-0251814-7.6	W106 $\phi$ 7.6	25	18	7.6	14°	60°	60°	2.6	4.0	7.5	5.0	1.2
W1-0302216-8.2	W107 $\phi$ 8.2	30	22	8.2	16°	60°	60°	3.1	5.0	8.5	5.0	1.2
W1-0302216-8.8	W107 $\phi$ 8.8	30	22	8.8	16°	60°	60°	3.3	5.0	8.5	5.0	1.2
W1-0302216-9.6	W107 $\phi$ 9.6	30	22	9.6	16°	60°	60°	3.5	5.0	8.5	5.0	1.2
W1-0352516-10.6	W108 $\phi$ 10.6	35	25	10.6	16°	60°	60°	3.5	5.0	8.5	5.0	1.2
W1-0352516-11.0	W108 $\phi$ 11.0	35	25	11.0	16°	60°	60°	3.5	5.0	8.5	5.0	1.2
W1-0352516-11.2	W108 $\phi$ 11.2	35	25	11.2	16°	60°	60°	3.8	5.0	8.5	5.0	1.2
W1-0352516-11.6	W108 $\phi$ 11.6	35	25	11.6	16°	60°	60°	3.8	5.0	8.5	5.0	1.2
W1-0352516-12.2	W108 $\phi$ 12.2	35	25	12.2	16°	60°	60°	3.8	5.0	8.5	5.0	1.2
W1-0402716-13.0	W109 $\phi$ 13.0	40	27	13.0	16°	60°	60°	4.0	5.0	11	6.0	1.5
W1-0503016-16.0	W109 $\phi$ 16.0	50	30	16.0	16°	60°	60°	5.0	5.0	13	6.5	1.5

**V 型 拉制黑色金属线材模坯 Type V Carbide drawing die for drawing metal wir**





新型号 New Type	原型号 Old Type	Dimension (mm) 基本尺寸					Reference dimension(mm) 参考尺寸					
		D	H	d	2 $\alpha$	2 $\gamma$	h	h <sub>1</sub>	h <sub>2</sub>	R	D <sub>1</sub>	e
V-0151316-0.6	V15-0.6-16	15	13	0.6	16°	75°	0.4	2.0	3.2	1.2	12.0	1.0
V-0151316-0.7		15	13	0.7	16°	75°	0.4	2.0	3.2	1.2	12.0	1.0
V-0151316-0.8	V15-0.8-16	15	13	0.8	16°	75°	0.6	2.0	3.2	1.2	12.0	1.0
V-0151316-0.9		15	13	0.9	16°	75°	0.6	2.0	3.3	1.2	12.0	1.0
V-0151316-1.0	V15-1.0-16	15	13	1.0	16°	75°	0.7	2.0	3.5	1.2	12.0	1.0
V-0151316-1.1	V15-1.1-16	15	13	1.1	16°	75°	0.7	2.0	3.5	1.2	12.0	1.0
V-0151316-1.2		15	13	1.2	16°	75°	0.8	2.0	3.8	1.2	12.0	1.0
V-0151312-1.3	V15-1.3	15	13	1.3	12°	85°	1.0	2.0	4.0	—	12.0	1.2
V-0151316-1.4		15	13	1.4	16°	75°	1.0	2.0	4.0	1.2	12.0	1.0
V-0151316-1.5		15	13	1.5	16°	75°	1.1	2.0	4.0	1.2	12.0	1.0
V-0151312-1.6	V15-1.6	15	13	1.6	12°	85°	1.2	2.0	4.0	—	12.0	1.2
V-0151316-1.6	V15-1.6-16	15	13	1.6	16°	75°	1.2	2.0	4.0	1.2	12.0	1.0
V-0151316-1.7		15	13	1.7	16°	75°	1.2	2.0	4.2	1.2	12.0	1.0
V-0151316-1.8	LV15-1.8-16	15	13	1.8	16°	75°	1.2	2.0	4.5	1.2	12.0	1.0
V-0151316-1.9		15	13	1.9	16°	75°	1.2	2.0	4.5	1.2	12.0	1.0
V-0151316-2.0	LV15-2.0-16	15	13	2.0	16°	75°	1.3	2.0	4.5	1.2	12.0	1.0
V-0151316-2.1		15	13	2.1	16°	75°	1.3	2.0	4.8	1.2	12.0	1.0
V-0151316-2.2		15	13	2.2	16°	75°	1.3	2.0	4.8	1.2	12.0	1.0
V-0151316-2.3	V15-2.3-16	15	13	2.3	16°	75°	1.3	2.0	5.0	1.2	12.0	1.0
V-0151316-2.4		15	13	2.4	16°	75°	1.3	2.0	5.0	1.2	12.0	1.0
V-0151316-2.5		15	13	2.5	16°	75°	1.3	2.0	5.0	1.2	12.0	1.0
V-0151316-2.6	15-2.6-16	15	13	2.6	16°	75°	1.3	2.0	5.0	1.2	12.0	1.0
V-0151316-2.7		15	13	2.7	16°	75°	1.3	2.0	5.0	1.2	12.0	1.0
V-0151316-2.8	V15-2.8-16	15	13	2.8	16°	75°	1.4	2.0	5.0	1.2	12.0	1.0
V-0151316-2.9		15	13	2.9	16°	75°	1.4	2.0	5.0	1.2	12.0	1.0
V-0151316-3.0	LV15-3.0-16	15	13	3.0	16°	75°	1.5	2.0	5.0	1.2	12.0	1.0
V-0151316-3.2		15	13	3.2	16°	75°	1.5	2.0	5.3	1.2	12.0	1.0
V-0151316-3.3	V15-3.3-16	15	13	3.3	16°	75°	1.5	2.0	5.0	1.2	12.0	1.0
V-0151316-3.5		15	13	3.5	16°	75°	1.6	2.0	5.5	1.2	12.0	1.0
V-0151316-3.6	V15-3.6-16	15	13	3.6	16°	75°	1.7	2.0	5.5	1.2	12.0	1.0
V-0151314-3.8		15	13	3.8	14°	70°	1.7	2.0	5.5	1.2	12.0	1.2
V-0151314-3.9	V15-3.9-16	15	13	3.9	14°	70°	1.8	2.0	5.5	1.2	12.0	1.0
V-0171512-2.5R	V17-2.5-15R	17	15	2.5	12°	60°	2.0	2.5	4.7	12	-	1.0
V-0171512-3.0R	V17-3-15R	17	15	3.0	12°	60°	2.0	2.5	4.7	12	-	1.0
V-0171512-3.5R	V17-3.5-15R	17	15	3.5	12°	60°	2.0	2.5	4.7	12	-	1.0
V-0171512-4.0R	V17-4-15R	17	15	4.0	12°	60°	2.0	3	4.8	12	-	1.0
V-0171512-2.5	V17-2.5-15R6.5	17	15	2.5	12°	60°	2.0	2.5	4.7	6.5	-	1.0
V-0171512-3.0	V17-3.0-15R6.5	17	15	3	12°	60°	2.0	2.5	4.7	6.5	-	1.0
V-0171512-3.5	V17-3.5-15R6.5	17	15	3.5	12°	60°	2.0	2.5	4.7	6.5	-	1.0
V-0171512-4.0	V17-4.0-15R6.5	17	15	4.0	12°	60°	2.0	2.5	4.7	6.5	-	1.0
V-0191716-1.8	V19-1.8-16	19	17	1.8	16°	75°	1.4	2.5	7.0	1.2	15.0	1.2

V-0191716-1.9		19	17	1.9	16°	75°	1.2	2.5	6.0	1.2	15.0	1.0
V-0191716-2.0	LV19-2.0-16	19	17	2.0	16°	75°	1.4	2.5	7.0	1.2	15.0	1.0
V-0191716-2.1		19	17	2.1	16°	75°	1.3	2.5	6.0	1.2	15.0	1.0
V-0191716-2.2		19	17	2.2	16°	75°	1.3	2.5	6.0	1.2	15.0	1.0
V-0191716-2.3	LV19-2.3-16	19	17	2.3	16°	75°	1.4	2.5	6.0	1.2	15.0	1.0
V-0191716-2.4		19	17	2.4	16°	75°	1.4	2.5	6.5	1.2	15.0	1.0
V-0191716-2.5		19	17	2.5	16°	75°	1.4	2.5	6.5	1.2	15.0	1.0
V-0191716-2.6	V19-2.6-16	19	17	2.6	16°	75°	1.4	2.5	7.0	1.2	15.0	1.0
V-0191716-2.7		19	17	2.7	16°	75°	1.4	2.5	7.0	1.2	15.0	1.0
V-0191716-2.8	V19-2.8-16	19	17	2.8	16°	75°	1.5	2.5	7.0	1.2	15.0	1.2
V-0191716-2.9		19	17	2.9	16°	75°	1.5	2.5	7.0	1.2	15.0	1.0
V-0191716-3.0	V19-3.0-16	19	17	3.0	16°	75°	1.5	2.5	7.0	1.2	15.0	1.2
V-0191716-3.2		19	17	3.2	16°	75°	1.5	2.5	7.0	1.2	15.0	1.0
V-0191716-3.3	V19-3.3-16	19	17	3.3	16°	75°	1.8	2.5	7.0	1.2	15.0	1.2
V-0191716-3.5		19	17	3.5	16°	75°	1.8	2.5	7.0	1.2	15.0	1.0
V-0191716-3.6	V19-3.6-16	19	17	3.6	16°	75°	1.8	2.5	7.0	1.2	15.0	1.2
V-0191716-3.8		19	17	3.8	16°	75°	1.9	2.5	7.0	1.2	15.0	1.0
V-0191716-3.9	LV19-3.9-16	19	17	3.9	16°	75°	2.0	2.5	7.0	1.2	15.0	1.2
V-0191716-4.1		19	17	4.1	16°	75°	2.1	2.5	7.0	1.2	15.0	1.0
V-0191716-4.2	V19-4.2-16	19	17	4.2	16°	75°	2.2	2.5	7.0	1.2	15.0	1.2
V-0191716-4.5		19	17	4.5	16°	75°	2.3	2.5	7.0	1.2	15.0	1.0
V-0191716-4.6	V19-4.6-16	19	17	4.6	16°	75°	2.4	2.5	7.0	1.2	15.0	1.0
V-0191716-4.9	V19-4.9-16	19	17	4.9	16°	75°	2.5	2.5	7.0	1.2	15.0	1.2
V-0191716-5.2	V19-5.2-16	19	17	5.2	16°	75°	2.6	2.5	7.0	1.2	15.0	1.2
V-0191716-5.5		19	17	5.5	16°	75°	2.7	2.5	7.0	1.2	16.0	1.0
V-0191716-5.6	V19-5.6-16	19	17	5.6	16°	75°	2.8	2.5	7.0	1.2	16.0	1.2
V-0191716-5.9	V19-5.9-19	19	17	5.9	16°	70°	3.0	2.5	7.0	1.2	16.0	1.0
V-0191716-6.2	V19-6.2-19	19	17	6.2	16°	70°	3.0	2.5	7.0	1.2	16.0	1.0
V-0191716-6.5	V19-6.5-19	19	17	6.5	16°	70°	3.0	2.5	7.0	1.2	16.0	1.0
V-0191716-6.8		19	17	6.8	16°	70°	3.0	2.5	7.0	1.2	16.0	1.0
V-0191714-6.9	V19-6.2-19	19	17	6.9	14°	70°	3.0	2.5	7.0	1.2	16.0	1.0
V-0231908-4.9		23	19	4.9	8°	60°	3.3	2.0	8.95	9.5	15.4	2.0
V-0231908-5.5		23	19	5.5	8°	60°	3.3	2.0	8.95	9.5	15.4	1.0
V-0231908-5.1		23	19	5.1	8°	60°	3.3	2.0	8.95	9.5	15.4	1.0
V-0252014-5.7	V25-5.7	25	20	5.7	14°	75°	2.5	3.0	7.0	1.5	20.0	1.0
V-0252014-6.0		25	20	6.0	14°	75°	2.6	3.0	7.0	1.5	20.0	1.0
V-0252014-6.2	V25-6.2	25	20	6.2	14°	75°	2.8	3.0	7.0	1.5	20.0	1.5
V-0252014-6.5		25	20	6.5	14°	75°	2.8	3.0	7.2	1.5	20.0	1.5
V-0252014-6.7	V25-6.7	25	20	6.7	14°	70°	2.8	3.0	7.5	1.5	20.0	1.5
V-0252014-7.0		25	20	7.0	14°	75°	2.9	3.0	7.5	1.5	20.0	1.5
V-0252014-7.2	V25-7.2	25	20	7.2	14°	70°	3.0	3.0	7.5	1.5	21.0	1.5
V-0252014-7.7	V25-7.7	25	20	7.7	14°	70°	3.0	3.0	8.0	1.5	21.0	1.5
V-0302114-8.2	V30-8.2	30	21	8.2	14°	75°	3.3	3.0	8.0	1.5	25.0	1.5

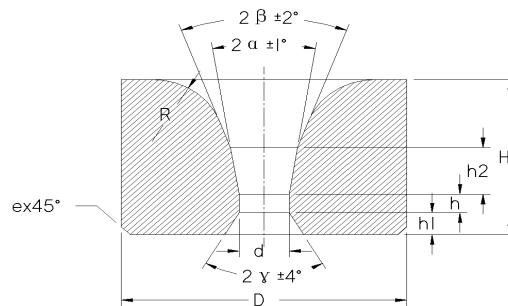
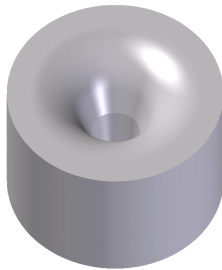
V-0302114-8.6	V30-8.6	30	21	8.6	14°	75°	3.3	3.0	8.5	1.5	25.0	1.5
V-0302114-9.0	V30-9.0	30	21	9.0	14°	75°	3.4	3.0	9.0	1.5	25.0	1.5
V-0302114-9.3	V30-9.3	30	21	9.3	14°	75°	3.4	3.0	9.0	1.5	25.0	1.5
V-0302114-9.6	V30-9.6	30	21	9.6	14°	75°	3.5	3.0	10.0	1.5	25.0	1.5
V-0302114-10.0	V30-10.0	30	21	10.0	14°	75°	3.6	3.0	10.0	1.5	25.0	1.5
V-0302114-10.5	V30-10.5	30	21	10.5	14°	75°	3.6	3.0	10.0	1.5	25.0	1.5
V-0302114-11.0	V30-11.0	30	21	11.0	14°	75°	3.7	3.0	10.5	1.5	25.0	1.5
V-0302114-11.5	V30-11.5	30	21	11.5	14°	75°	3.7	3.0	10.5	1.5	25.0	1.5

**LV 拉制黑色金属线材模坯 Carbide drawing die for drawing metal wire**

新型号 New Type	原型号 Old Type	Dimension (mm) 基本尺寸						Reference dimension(mm) 参考尺寸				
		D	d	d1	H	h1	h	2 $\alpha^0$	2 $\beta^0$	R	e	$\epsilon$
LV-0131012-0.4	LV13-0.4	13	0.4	9	10	3.0	0.6	12 <sup>0</sup>	90 <sup>0</sup>	6	1.2	45°
LV-0131012-0.6	LV13-0.6	13	0.6	9	10	2.0	0.6	12 <sup>0</sup>	90 <sup>0</sup>	6	1.2	45°
LV-0131012-1.0	LV13-1.0	13	1.0	9	10	2.0	0.6	12 <sup>0</sup>	90 <sup>0</sup>	6	1.2	45°
LV-0131012-1.3	LV13-1.3	13	1.3	9	10	3.0	0.6	12 <sup>0</sup>	90 <sup>0</sup>	6	1.2	45°
LV-0131012-1.5	LV13-1.5	13	1.5	9	10	2.0	0.6	12 <sup>0</sup>	90 <sup>0</sup>	6	1.2	45°
LV-0151212-0.4	LV15-0.4	15	0.4	13	12	2.0	0.6	12 <sup>0</sup>	85 <sup>0</sup>	9.7	1.2	45°
LV-0151312-1.5	LV15-1.5	15	1.5	12	13	2.0	1.0	12 <sup>0</sup>	85 <sup>0</sup>	6.8	1.2	45°
LV-0171514-0.5	LV17-0.5	17	0.5	13	15	3.0	0.6	14 <sup>0</sup>	90 <sup>0</sup>	10	1.2	45°
LV-0171514-0.6	LV17-0.6	17	0.6	13	15	3.0	0.6	14 <sup>0</sup>	90 <sup>0</sup>	10	1.2	45°
LV-0171514-0.8	LV17-0.8	17	0.8	13	15	3.0	0.7	14 <sup>0</sup>	90 <sup>0</sup>	10	1.2	45°
LV-0171514-1.0	LV17-1.0	17	1.0	13	15	3.0	0.7	14 <sup>0</sup>	90 <sup>0</sup>	10	1.2	45°
LV-0171514-1.2	LV17-1.2	17	1.2	13	15	3.0	0.9	14 <sup>0</sup>	90 <sup>0</sup>	10	1.2	15°
LV-0171514-1.5	LV17-1.5	17	1.5	13	15	3.0	0.9	14 <sup>0</sup>	90 <sup>0</sup>	10	1.2	15°
LV-0171514-2.0	LV17-2.0	17	2.0	13	15	3.0	1.0	14 <sup>0</sup>	90 <sup>0</sup>	10	1.2	15°
LV-0171514-2.5	LV17-2.5	17	2.5	13	15	3.0	1.0	14 <sup>0</sup>	90 <sup>0</sup>	10	1.2	15°
LV-0171514-3.0	LV17-3.0	17	3.0	13	15	3.0	1.0	14 <sup>0</sup>	90 <sup>0</sup>	10	1.2	15°
LV-0171514-3.5	LV17-3.5	17	3.5	13	15	3.0	1.3	14 <sup>0</sup>	90 <sup>0</sup>	10	1.2	15°
LV-0171514-4.0	LV17-4.0	17	4.0	13	15	3.0	1.5	14 <sup>0</sup>	90 <sup>0</sup>	10	1.2	15°
LV-0191712-1.0	LV19-1.0	19	1.0	15	17	2.5	1.0	12 <sup>0</sup>	85 <sup>0</sup>	8.5	1.5	15°
LV-0191712-1.3	LV19-1.3	19	1.3	15	17	2.5	1.0	12 <sup>0</sup>	85 <sup>0</sup>	8.5	1.5	15°
LV-0191712-1.5	LV19-1.5	19	1.5	15	17	2.5	1.2	12 <sup>0</sup>	85 <sup>0</sup>	8.5	1.5	15°
LV-0191712-2.0	LV19-2.0	19	2.0	15	17	2.5	1.3	12 <sup>0</sup>	85 <sup>0</sup>	8.5	1.5	15°
LV-0191712-3.0	LV19-3.0	19	3.0	15	17	2.5	1.5	12 <sup>0</sup>	85 <sup>0</sup>	8.5	1.5	15°
LV-0191712-4.0	LV19-4.0	19	4.0	15	17	2.5	1.7	12 <sup>0</sup>	85 <sup>0</sup>	8.5	1.5	15°
LV-0221816-1.5	LV22-1.5	22	1.5	18	18	3.6	1.0	16 <sup>0</sup>	90 <sup>0</sup>	12	1.5	15°
LV-0221816-2.0	LV22-2.0	22	2.0	18	18	3.6	1.0	16 <sup>0</sup>	90 <sup>0</sup>	12	1.5	15°
LV-0221816-3.0	LV22-3.0	22	3.0	18	18	3.6	1.0	16 <sup>0</sup>	90 <sup>0</sup>	12	1.5	45°
LV-0221816-3.5	LV22-3.5	22	3.5	18	18	3.6	1.5	16 <sup>0</sup>	90 <sup>0</sup>	12	1.5	45°
LV-0221816-4.0	LV22-4.0	22	4.0	18	18	3.6	1.5	16 <sup>0</sup>	90 <sup>0</sup>	12	1.5	45°

LV-0221816-4.5	LV22-4.5	22	4.5	18	18	3.6	1.8	16°	90°	12	1.5	45°
LV-0221816-5.0	LV22-5.0	22	5.0	18	18	3.6	1.8	16°	90°	12	1.5	45°
LV-0221816-5.5	LV22-5.5	22	5.5	18	18	3.6	2.0	16°	90°	12	1.5	ε
LV-0221816-6.0	LV22-6.0	22	6.0	18	18	3.6	2.0	16°	90°	12	1.5	45°
LV-0221816-6.5	LV22-6.5	22	6.5	18	18	3.6	2.0	16°	90°	12	1.5	45°
LV-0302018-7.7	LV30-7.7-L	30	7.7	25	20	3.5	3.0	18°	75°	11	1.5	45°
LV-0302018-9.0	LV30-9.0-L	30	9.0	25	20	3.5	3.0	18°	75°	11	1.5	45°
LV-0302018-10.0	LV30-10.0L	30	10.0	25	20	3.5	3.0	18°	75°	11	1.5	45°
LV-0302018-11.0	LV30-11.0L	30	11.0	25	20	3.5	3.0	18°	75°	11	1.5	45°

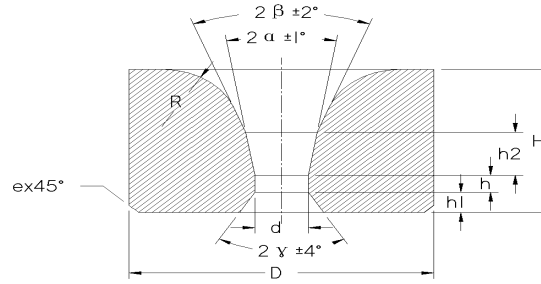
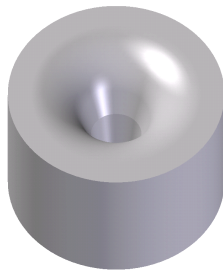
**E 型 拉制黑色金属线材模坯 Type E Carbide drawing die for drawing metal wires**



新型号 New Type	原型号 Old Type	Dimension (mm) 基本尺寸						Reference dimension(mm) 参考尺寸				
		D	H	d	2α	2β	2γ	h	h <sub>1</sub>	h <sub>2</sub>	R	e
E-0151318-1.8	LE15181830	15	13	1.8	18°	30°	60°	1.2	2.0	5.0	4.0	1.0
E-0151318-2.0	LE15201830	15	13	2.0	18°	30°	60°	1.2	2.0	5.0	4.0	1.0
E-0151318-2.3	LE15231830	15	13	2.3	18°	30°	60°	1.2	2.0	5.0	4.0	1.0
E-0151318-2.5	LE15251830	15	13	2.5	18°	30°	60°	1.2	2.0	5.0	4.0	1.0
E-0151318-2.8	LE15281830	15	13	2.8	18°	30°	60°	1.2	2.0	5.0	4.0	1.0
E-0191718-3.3	LE19331840	19	17	3.3	18°	40°	60°	1.8	2.5	7.0	3.0	1.0
E-0191718-3.6	LE19361840	19	17	3.6	18°	40°	60°	1.8	2.5	7.0	3.0	1.0
E-0201727-3.0	LE20302740	20	17	3.0	27°	40°	60°	1.8	2.0	6.0	5.0	1.5
E-0201727-3.3	LE20332740	20	17	3.3	27°	40°	60°	1.8	2.5	6.0	5.0	1.5
E-0201727-3.5	LE20352740	20	17	3.5	27°	40°	60°	1.8	2.5	6.0	5.0	1.5

E-0201727-3.7	LE20372740	20	17	3.7	27°	40°	60°	1.8	2.5	6.0	5.0	1.5
E-0201727-4.0	LE20402740	20	17	4.0	27°	40°	60°	1.8	2.5	6.0	5.0	1.5
E-0201727-4.2	LE20422750	20	17	4.2	27°	50°	60°	2.0	2.5	7.0	5.0	1.5
E-0201727-4.6	LE20462750	20	17	4.6	27°	50°	60°	2.0	2.5	7.0	4.0	1.5
E-0201727-5.2	LE20522750	20	17	5.2	27°	50°	60°	2.5	3.0	7.0	5.0	1.5
E-0201727-5.5	LE20552750	20	17	5.5	27°	50°	60°	2.5	3.0	7.0	5.0	1.5
E-0201727-5.7	LE20572750	20	17.5	5.7	27°	50°	60°	2.5	3.0	7.0	5.0	1.5
E-0201727-5.9	LE20592750	20	17.5	5.9	27°	50°	60°	2.5	3.0	7.0	5.0	1.5
E-0201730-4.3	LE20433050	20	17	4.3	30°	50°	60°	1.8	2.5	7.0	5.0	1.5
E-0201730-4.6	LE20463050	20	17	4.6	30°	50°	60°	2.3	3.0	6.0	5.0	1.5
E-0201730-4.9	LE20493050	20	17.5	4.9	30°	50°	60°	2.3	3.0	7.0	5.0	1.5
E-0201730-5.2	LE20523050	20	17.5	5.2	30°	50°	60°	2.5	3.0	7.0	4.0	1.5
E-0201730-5.5	LE20553050	20	17.5	5.5	30°	50°	60°	2.5	3.0	7.0	4.0	1.5
E-0201730-5.7	LE20573050	20	17.5	5.7	30°	50°	60°	2.5	3.0	7.0	4.0	1.5
E-0211727-6.0	LE21603050	21	17.5	6.0	27°	50°	60°	2.8	3.0	7.0	5.0	1.5
E-0211727-6.3	LE21633050	21	17.5	6.3	27°	50°	60°	2.8	3.0	7.0	5.0	1.5

**A 型** 拉制黑色金属线材模 Type A Carbide drawing die for drawing metal wires



新型号 New Type	原型号 Old Type	Dimension (mm) 基本尺寸						Reference dimension(mm) 参考尺寸					
		D	H	d	2α	2β	2γ	h	h <sub>1</sub>	h <sub>2</sub>	R	e	E
A-0100812-0.30	A10-0.30	10	8	0.3 0	12°	90°	90°	≤0.1	1.6	3.7	5.0	1.0	45°
A-0100812-0.35	A10-0.35	10	8	0.3 5	12°	90°	90°	≤0.1	1.6	3.7	5.0	1.0	45°
A-0100812-0.40	A10-0.4	10	8	0.4 0	12°	90°	90°	≤0.1	1.6	3.7	5.0	1.0	45°
A-0100812-0.60	A10-0.6	10	8	0.6	12°	90°	90°	0.5	1.6	3.5	—	0.5	45°
A-0100812-0.80	A10-0.8	10	8	0.8	12°	90°	90°	0.6	1.6	3.5	—	0.5	45°
A-0100812-1.0	A10-1.0	10	8	1.0	12°	90°	90°	0.6	1.6	3.5	—	0.5	45°
A-0100816-0.4D		10	8	0.4	16	60	90	0.6	1.6	2.5	2.5	1	45°
A-0100816-0.6D		10	8	0.6	16	60	90	0.6	1.6	2.5	2.5	1	45°
A-0100816-1.0D		10	8	1.0	16	60	90	0.6	1.6	2.5	2.5	1	45°
A-0121012-0.20	A12-0.2	12	10	0.2 0	12°	90°	90°	≤0.1	1.2	2.9	6.5	1.2	15°
A-0121012-0.25	A12-0.25	12	10	0.2 5	12°	90°	90°	≤0.1	1.2	2.9	6.5	1.2	15°
A-0121012-0.30	A12-0.3	12	10	0.3 0	12°	90°	90°	≤0.1	1.2	2.9	6.5	1.2	15°
A-0121012-0.35	A12-0.35	12	10	0.3 5	12°	90°	90°	≤0.1	1.2	2.9	6.5	1.2	15°
A-0121012-0.40	A12-0.4	12	10	0.4 0	12°	90°	90°	0.4	2.0	5.0	—	1.0	45°
A-0121012-0.60	A12-0.6	12	10	0.6 0	12°	90°	90°	0.5	2.0	5.0	—	1.0	45°
A-0121012-0.80	A12-0.8	12	10	0.8 0	12°	90°	90°	0.6	2.0	5.0	—	1.0	45°
A-0121012-1.0	A12-1.0	12	10	1.0	12°	90°	90°	0.7	1.8	4.8	—	1.0	45°
A-0121012-1.4	A12-1.4	12	10	1.4	12°	90°	90°	1.0	1.8	4.8	—	1.0	45°
A-0121012-1.6	A12-1.6	12	10	1.6	12°	90°	90°	1.1	1.8	4.8	—	1.0	45°
A-0121012-1.8	A12-1.8	12	10	1.8	12°	90°	90°	1.2	1.8	4.8	—	1.0	45°
A-0141212-0.40	A14-0.4	14	12	0.4	12°	60°	75°	0.4	2.0	5.0	—	1.0	45°
A-0141212-0.60	A14-0.6	14	12	0.6	12°	60°	75°	0.5	2.0	5.0	—	1.0	45°

A-0141212-0.80	A14-0.8	14	12	0.8	12°	60°	75°	0.6	2.0	5.0	—	1.0	45°
A-0141212-1.0	A14-1.0	14	12	1.0	12°	60°	75°	0.7	2.0	5.0	—	1.0	45°
A-0141212-1.3	A14-1.3	14	12	1.3	12°	60°	75°	1.0	2.0	5.0	—	1.0	45°
A-0141212-1.8	A14-1.8	14	12	1.8	12°	60°	75°	1.2	2.0	5.0	—	1.0	45°
A-0141214-2.3	A14-2.3	14	12	2.3	14°	60°	75°	1.3	2.0	5.0	—	1.0	45°
A-0161312-0.6	A16-0.6	16	13	0.6	12°	60°	75°	0.5	2.5	4.5	—	1.0	45°
A-0161312-0.8	A16-0.8	16	13	0.8	12°	60°	75°	0.6	2.5	4.5	—	1.0	45°
A-0161312-1.0	A16-1.0	16	13	1.0	12°	60°	75°	0.7	2.5	4.5	—	1.0	45°
A-0161312-1.4	A16-1.4	16	13	1.4	12°	60°	75°	1.0	2.5	4.5	—	1.0	45°
A-0161312-1.8	A16-1.8	16	13	1.8	12°	60°	75°	1.2	2.5	4.0	—	1.0	45°
A-0161314-2.2	A16-2.2	16	13	2.2	14°	60°	75°	1.3	2.5	4.0	—	1.0	45°
A-0161314-2.4	A16-2.4	16	13	2.4	14°	60°	75°	1.3	2.5	4.0	—	1.0	45°
A-0161314-2.6	A16-2.4	16	13	2.6	14°	60°	75°	1.3	2.5	4.0	—	1.0	45°
A-0161314-3.0	A16-3.0	16	13	3.0	14°	60°	75°	1.4	2.5	4.0	—	1.0	45°
A-0201712-1.0	A20-1.0	20	17	1.0	12°	60°	60°	0.7	3.0	8.0	—	1.2	45°
A-0201712-1.3	A20-1.3	20	17	1.3	12°	60°	60°	1.0	3.0	8.0	—	1.2	45°
A-0201714-2.0	A20-2.0	20	17	2.0	14°	60°	60°	1.3	3.0	7.0	—	1.2	45°
A-0201714-2.2	A20-2.2	20	17	2.2	14°	60°	60°	1.3	3.0	7.0	—	1.2	45°
A-0201714-2.3	A20-2.3	20	17	2.3	14°	60°	60°	1.3	3.0	7.0	—	1.2	45°
A-0201714-2.8	A20-2.8	20	17	2.8	14°	60°	60°	1.4	3.0	7.0	—	1.2	45°
A-0201714-3.3	A20-3.3	20	17	3.3	14°	60°	60°	1.6	3.0	7.0	—	1.2	45°
A-0201714-3.8	A20-3.8	20	17	3.8	14°	60°	60°	1.9	3.0	7.0	—	1.2	45°
A-0201714-4.2	A20-4.2	20	17	4.2	14°	60°	60°	1.9	3.0	7.0	—	1.2	45°
A-0201714-4.7	A20-4.7	20	17	4.7	14°	60°	60°	1.9	3.0	7.0	—	1.2	45°
A-0201714-4.8	A20-4.8	20	17	4.8	14°	60°	60°	2.0	3.0	7.0	—	1.2	45°
A-0252014-2.3	A25-2.3	25	20	2.3	14°	60°	60°	1.3	4.0	8.5	—	1.2	45°
A-0252014-2.8	A25-2.8	25	20	2.8	14°	60°	60°	1.4	4.0	8.5	—	1.2	45°
A-0252014-3.3	A25-3.3	25	20	3.3	14°	60°	60°	1.6	4.0	8.5	—	1.2	45°
A-0252014-3.8	A25-3.8	25	20	3.8	14°	60°	60°	1.9	4.0	8.0	—	1.2	45°
A-0252014-4.2	A25-4.2	25	20	4.2	14°	60°	60°	1.9	4.0	8.0	—	1.2	45°
A-0252016-4.7	A25-4.7	25	20	4.7	16°	60°	60°	1.9	4.0	8.0	—	1.2	45°
A-0252016-4.8	A25-4.8	25	20	4.8	16°	60°	60°	1.9	4.0	8.0	—	1.2	45°
A-0252016-5.2	A25-5.2	25	20	5.2	16°	60°	60°	1.9	4.0	8.0	—	1.2	45°
A-0252016-5.5	A25-5.5	25	20	5.5	16°	60°	60°	2.2	4.0	7.5	—	1.2	45°
A-0252016-5.7	A25-5.7	25	20	5.7	16°	60°	60°	2.4	4.0	7.5	—	1.2	45°
A-0252016-6.2	A25-6.2	25	20	6.2	16°	60°	60°	2.6	4.0	7.5	—	1.2	45°
A-0252118-6.5	A25-6.5	25	21	6.5	18°	60°	60°	2.1	3.0	9.6	—	1.2	45°
A-0252118-7.0	A25-7.0	25	21	7.0	18°	60°	60°	2.5	3.0	9.6	—	1.2	45°
A-0252118-7.5	A25-7.0	25	21	7.5	18°	60°	60°	2.5	3.0	9.6	—	1.2	45°
A-0252118-8.5	A25-8.5	25	21	8.5	18°	60°	60°	2.5	3.0	9.6	—	1.2	45°
A-0292014-6.9	A29-6.9	29	20	6.9	14°	60°	60°	2.5	4.0	8.0	—	1.2	45°
A-0302416-3.8	A30-3.8	30	24	3.8	16°	60°	60°	2.5	5.0	8.0	—	1.2	45°
A-0302416-4.2	A30-4.2	30	24	4.2	16°	60°	60°	2.5	5.0	8.0	—	1.2	45°



A-0302416-4.7	A30-4.7	30	24	4.7	16°	60°	60°	2.5	4.0	8.0	—	1.2	45°
A-0302416-5.2	A30-5.2	30	24	5.2	16°	60°	60°	2.5	4.0	8.0	—	1.2	45°
A-0302416-5.5	A30-5.5	30	24	5.5	16°	60°	60°	2.5	3.0	8.0	5.0	1.2	45°
A-0302416-5.7	A30-5.7	30	24	5.7	16°	60°	60°	2.6	5.0	8.0	—	1.2	45°
A-0302416-6.2	A30-6.2	30	24	6.2	16°	60°	60°	2.6	5.0	8.0	5.0	1.2	45°
A-0302416-6.5	A30-6.5	30	24	6.5	16°	60°	60°	2.5	5.0	8.0	—	1.2	45°
A-0302416-6.7	A30-6.7	30	24	6.7	16°	60°	60°	2.6	5.0	8.5	—	1.2	45°
A-0302416-7.7	A30-7.7	30	24	7.7	16°	60°	60°	3.0	5.0	8.5	—	1.2	45°
A-0302416-8.7	A30-8.7	30	24	8.7	16°	60°	60°	3.3	5.0	8.5	—	1.2	45°
A-0302416-9.0	A30-9.0	30	24	9.0	16°	60°	60°	3.5	3.0	8.5	5.0	1.2	45°
A-0302416-9.7	A30-9.7	30	24	9.7	16°	60°	60°	3.5	3.0	8.0	—	1.2	45°

**R4 拉制黑色金属线材模坯 Carbide drawing die for drawing metal wires**

新型号 New Type	原型号 Old Type	Dimension (mm) 基本尺寸						Reference dimension(mm) 参考尺寸				
		D	H	d	D1	2α	2γ	h	h <sub>1</sub>	R	e	E
R4-0121112-2.2	R4-2.2-1 2	12. 7	11. 4	2.2	10. 0	12	90	1.2	2.0	5.0	1.0	45
R4-0121112-2.4	R4-2.4-1 2	12. 7	11. 4	2.4	10. 0	12	90	1.2	2.0	5.0	1.0	45
R4-0121112-2.6	R4-2.6-1 2	12. 7	11. 4	2.6	10. 0	12	90	1.2	2.0	5.0	1.0	45
R4-0121112-2.8	R4-2.8-1 2	12. 7	11. 4	2.8	10. 0	12	90	1.2	2.0	5.0	1.0	45
R4-0121112-3.0	R4-3.0-1 2	12. 7	11. 4	3.0	10. 0	12	90	1.4	2.0	5.5	1.0	45
R4-0121112-3.2	R4-3.2-1 2	12. 7	11. 4	3.2	10. 0	12	90	1.4	2.0	5.5	1.0	45
R4-0121112-3.4	R4-3.4-1 2	12. 7	11. 4	3.4	10. 0	12	90	1.4	2.0	5.5	1.0	45
R4-0121112-3.6	R4-3.6-1 2	12. 7	11. 4	3.6	10. 0	12	90	1.4	2.0	5.5	1.0	45
R4-0121112-3.8	R4-3.8-1 2	12. 7	11. 4	3.8	10. 0	12	90	1.4	2.0	5.5	1.0	45

**R5 拉制黑色金属线材模坯 Carbide drawing die for drawing metal wires**

新型号 New Type	原型号 Old Type	Dimension (mm) 基本尺寸						Reference dimension(mm) 参考尺寸				
		D	H	d	2α	2β	2γ	h	h <sub>1</sub>	H <sub>2</sub>	R	E
R5-0161512-1. 2	R5-1.2	16	15	1.2	12	35	70	0.6	2.5	6.0	3.0	1.0
R5-0161512-2. 4	R5-2.4	16	15	2.4	12	35	70	1.2	2.5	5.6	3.0	1.0
R5-0161512-2. 5	R5-2.5	16	15	2.5	12	35	70	1.25	2.5	5.6	2.5	1.0
R5-0161512-3. 1	R5-3.1	16	15	3.1	12	35	70	1.5	2.5	5.3	2.5	1.0

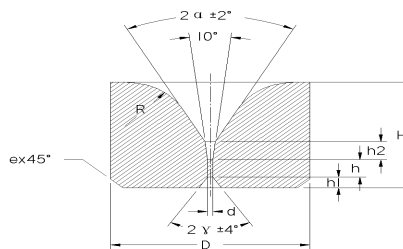
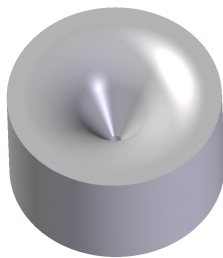
### R6 拉制黑色金属线材模坯 Carbide drawing die for drawing metal wires

新型号 New Type	原型号 Old Type	Dimension (mm) 基本尺寸							Reference dimension(mm) 参考尺寸				
		D	H	d	2α	2β	2λ	2γ	h	h <sub>1</sub>	H <sub>2</sub>	R	E
R6-0181716-1. 5	R6-1.5	18	17	1.5	16	35	70	60	0.6	3.0	6.0	2.0	1.0
R6-0181716-1. 9	R6-1.9	18	17	1.9	16	35	70	60	1.0	3.0	5.8	2.0	1.0
R6-0181716-3. 6		18	17	3.6	12	35	70	60	2.0	3.0	4.5	1.5	1.0
R6-0181716-4. 2		18	17	4.2	12	35	70	60	2.0	3.0	4.5	1.5	1.0
R6-0181716-4. 6	R6-4.6	18	17	4.6	16	35	70	60	2.2	3.0	4.6	1.5	1.0

### 有色金属线材拉伸模坯型 The type of drawing die for drawing non-ferrous metal wires

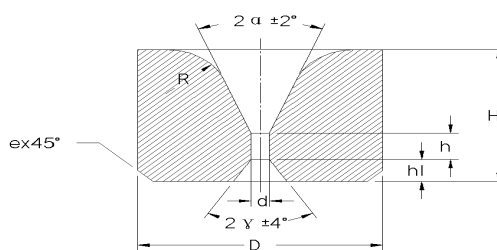
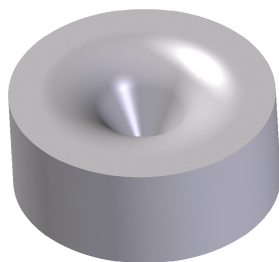
#### S01 型 拉制有色金属线材模坯 Carbide drawing die for drawing non-ferrous metal wire

**Type S01**



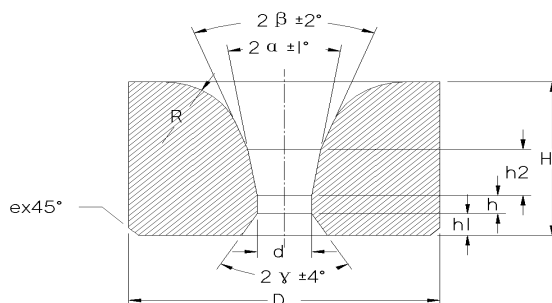
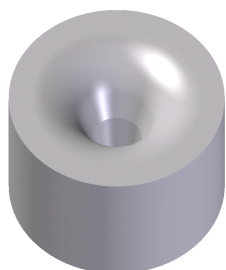
新型号 New Type	原型号 Old Type	Dimension (mm) 基本尺寸					Reference dimension(mm) 参考尺寸			
		D	H	d	2α	2γ	h	h <sub>1</sub>	h <sub>2</sub>	R
S01-0060440-0.8	S01-0.8	6	4	0.2	40°	60°	0.8	0.6	0.8	1.5
S01-0080640-1.0	S01-1.0	8	6	0.2	40°	60°	1.0	0.6	1.0	2.5

**S10 型 拉制有色金属线材模坯** Carbide drawing die for drawing non-ferrous metal wire  
**Type S10**



新型号 New Type	原型号 Old Type	Dimension (mm) 基本尺寸					Reference dimension(mm) 参考尺寸			
		D	H	d	2α	2γ	h	h <sub>1</sub>	R	e
S10-0060440-0.3	S10-0.3	6	4	0.3	40°	60°	0.6	0.8	1.5	0.5
S10-0060440-0.4	S10-0.4	6	4	0.4	40°	60°	0.6	0.8	1.5	0.5
S10-0060440-0.6	S10-0.6	6	4	0.6	40°	60°	0.8	0.8	1.5	0.5
S10-0060440-0.7	S10-0.7	6	4	0.7	40°	60°	0.9	0.8	1.5	0.5
S10-0060440-0.8	S10-0.8	6	4	0.8	40°	60°	1.0	0.8	1.5	0.5
S10-0080640-0.3	LS10-0.3-8	8	6	0.3	40°	60°	0.2	1.0	2.0	0.5
S10-0080640-0.4	LS10-0.4-8	8	6	0.4	40°	60°	0.4	1.0	2.0	0.5
S10-0080640-0.6	LS10-0.6-8	8	6	0.6	40°	60°	0.6	1.0	2.0	0.5
S10-0080640-0.8	LS10-0.8-8	8	6	0.8	40°	60°	0.8	1.0	2.0	0.5
S10-0080640-1.0		8	6	1.0	40°	60°	1.0	0.6	2.5	0.5

**S12 型 拉制有色金属线材模坯** Carbide drawing for drawing non-ferrous metal wire  
**Type S12**



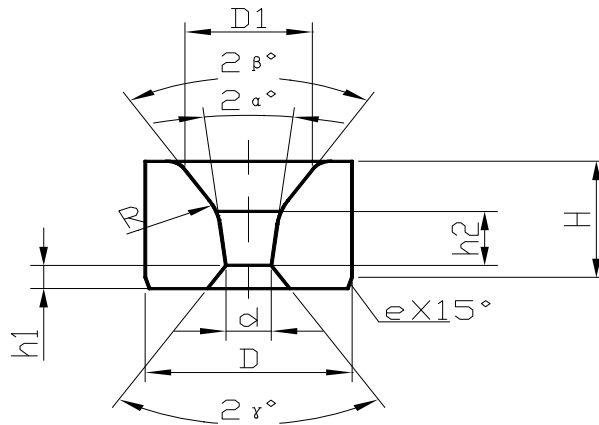
新型号 New Type	原型号 Old Type	Dimension (mm) 基本尺寸	Reference dimension(mm) 参考尺寸
-----------------	-----------------	---------------------	------------------------------

		D	H	d	2 $\alpha$	2 $\beta$	2 $\gamma$	h	h <sub>1</sub>	h <sub>2</sub>	R	e
S12-0080616-0.4	LS12-0.4	8	6	0.4	16°	40°	60°	0.3	1.0	1.6	2.5	0.6
S12-0080616-0.6	LS12-0.6	8	6	0.6	16°	40°	60°	0.3	1.0	1.6	2.5	0.6
S12-0080616-0.8	LS12-0.8	8	6	0.8	16°	40°	60°	0.4	1.0	1.6	2.5	0.6
S12-0130816-0.4	LS12-0.4-13	13	8	0.4	16°	40°	60°	0.3	1.2	2.0	3.0	1.0
S12-0130816-0.6	LS12-0.6-13	13	8	0.6	16°	40°	60°	0.3	1.2	2.0	3.0	1.0
S12-0130816-0.8	LS12-0.8-13	13	8	0.8	16°	40°	60°	0.4	1.2	2.0	3.0	1.0
S12-0130816-1.0	LS12-1.0-13	13	8	1.0	16°	40°	60°	0.6	1.2	2.5	3.0	1.0
S12-0130816-1.3	LS12-1.3-13	13	8	1.3	16°	40°	60°	0.6	1.2	2.5	3.0	1.0
S12-0130816-1.5		13	8	1.5	16°	40°	60°	0.7	1.2	2.5	3.0	1.0
S12-0130816-1.7		13	8	1.7	16°	40°	60°	0.8	1.2	2.5	3.0	1.0
S12-0130816-1.8	LS12-1.3-13	13	8	1.8	16°	40°	60°	0.8	1.2	2.5	3.0	1.0
S12-0130816-2.0		13	8	2.0	16°	40°	60°	0.8	1.2	2.5	3.0	1.0
S12-0130816-2.1		13	8	2.1	16°	40°	60°	0.8	1.2	2.5	3.0	1.0
S12-0130816-2.3	LS12-2.3-13	13	8	2.3	16°	40°	60°	0.8	1.2	2.5	3.0	1.0
S12-0161018-0.8	LS12-0.8-16	16	10	0.8	18°	40°	60°	0.4	1.6	2.5	4.0	1.0
S12-0161018-1.0	LS12-1.0-16	16	10	1.0	18°	40°	60°	0.6	1.6	2.5	4.0	1.0
S12-0161018-1.1		16	10	1.1	18°	40°	60°	0.6	1.6	2.5	4.0	1.0
S12-0161018-1.2		16	10	1.2	18°	40°	60°	0.6	1.6	2.5	4.0	1.0
S12-0161018-1.3	LS12-1.3-16	16	10	1.3	18°	40°	60°	0.6	1.6	2.5	4.0	1.0
S12-0161018-1.5		16	10	1.5	18°	40°	60°	0.6	1.6	2.5	4.0	1.0
S12-0161018-1.7	LS12-1.7-16	16	10	1.7	18°	40°	60°	0.75	1.6	3.0	4.0	1.0
S12-0161018-1.8	LS12-1.8-16	16	10	1.8	18°	40°	60°	0.8	1.6	3.0	4.0	1.0
S12-0161018-2.0		16	10	2.0	18°	40°	60°	0.8	1.6	3.0	4.0	1.0
S12-0201220-2.3	LS12-2.3-20	20	12	2.3	20°	40°	60°	0.8	1.6	3.0	4.0	1.0
S12-0201220-2.5	LS12-2.5-20	20	12	2.5	20°	40°	60°	0.8	1.6	3.0	4.0	1.0
S12-0201220-2.8	LS12-2.8-20	20	12	2.8	20°	40°	60°	1.0	2.0	4.0	4.0	1.0
S12-0201220-2.9		20	12	2.9	20°	40°	60°	1.2	2.0	4.5	4.0	1.0
S12-0201220-3.1		20	12	3.1	20°	40°	60°	1.2	2.0	4.5	4.0	1.0
S12-0201220-3.3	LS12-3.3-20	20	12	3.3	20°	40°	60°	1.2	2.0	4.5	4.0	1.0
S12-0201220-3.5		20	12	3.5	20°	40°	60°	1.2	2.0	4.5	4.0	1.0
S12-0201220-3.8	LS12-3.8-20	20	12	3.8	20°	40°	60°	1.2	2.0	4.5	4.0	1.0
S12-0201220-4.0		20	12	4.0	20°	40°	60°	1.2	2.0	4.5	4.0	1.0
S12-0221422-4.2	LS12-4.2-22	22	14	4.2	22°	40°	60°	1.4	2.0	5.5	4.0	1.0
S12-0221422-4.5		22	14	4.5	22°	40°	60°	1.4	2.0	5.5	4.0	1.0
S12-0221422-4.7	LS12-4.7-22	22	14	4.7	22°	40°	60°	1.4	2.0	5.5	4.0	1.0
S12-0221422-5.0		22	14	5.0	22°	40°	60°	1.4	2.0	5.5	4.0	1.0
S12-0221422-5.2	LS 12-5.2	22	14	5.2	22°	40°	60°	1.6	2.0	5.5	4.0	1.0
S12-0221422-5.5		22	14	5.5	22°	40°	60°	1.6	2.0	5.5	4.0	1.0
S12-0221422-5.7	LS12-5.7-22	22	14	5.7	22°	40°	60°	2.0	2.0	5.5	4.0	1.0
S12-0221622-6.4	LS12-6.4-22	22	16	6.4	22°	40°	60°	2.0	2.0	6.5	4.5	1.0
S12-0221622-7.2	LS12-7.2-22	22	16	7.2	22°	40°	60°	2.3	2.0	6.5	4.5	1.0

S12-0221622-8.0	LS12-8.0-22	22	16	8.0	22°	40°	60°	2.3	2.0	6.5	4.5	1.0
S12-0261622-6.4	LS12-6.4-26	26	16	6.4	22°	40°	60°	2.0	3.5	7.5	3.5	1.0
S12-0261622-6.7		26	16	6.7	22°	40°	60°	2.0	3.5	7.5	3.5	1.0
S12-0261622-7.0	LS12-7.0-26	26	16	7.0	22°	40°	60°	2.0	3.5	7.5	3.5	1.0
S12-0261622-7.2	LS12-7.2-26	26	16	7.2	22°	40°	60°	2.0	3.5	7.5	3.5	1.0
S12-0261622-7.5		26	16	7.5	22°	40°	60°	2.0	3.5	7.5	3.5	1.0
S12-0261622-7.7		26	16	7.7	22°	40°	60°	2.0	3.5	7.5	3.5	1.0
S12-0261622-8.0	LS12-8.0-26	26	16	8.0	22°	40°	60°	2.0	3.5	7.5	3.5	1.0

### 金属钢帘线线材拉伸模坯型号 The type of drawing die for metal steel cord

#### LSV 型 拉制金属钢帘线线材模坯 Type LSV Wire die for metal steel cord



新型号 New Type	原型号 Old Type	Dimension (mm) 基本尺寸						Reference dimension(mm) 参考尺寸					
		D	H	d	2α°	2β°	2γ°	h	h <sub>1</sub>	h <sub>2</sub>	R	e	D1
LSV-0161312-0.8		16	13	0.8	12	60	75	0	2.9	3.0	8.0	1.5	8.2
LSV-0161312-0.9		16	13	0.9	12	60	75	0	2.9	3.0	8.0	1.5	8.2
LSV-0161312-1.0		16	13	1.0	12	60	75	0	2.6	3.3	8.0	1.5	8.7
LSV-0161312-1.2		16	13	1.2	12	60	75	0	2.6	3.3	8.0	1.5	8.7
LSV-0161312-1.4		16	13	1.4	12	60	75	0	2.6	3.3	8.0	1.5	8.7
LSV-0161312-1.6		16	13	1.6	12	60	75	0	2.6	3.3	8.0	1.5	8.7
LSV-0161312-1.8		16	13	1.8	12	60	75	0	2.6	3.3	8.0	1.5	8.7
LSV-0161312-2.1		16	13	2.1	12	60	75	0	2.6	3.3	8.0	1.5	8.7

LSV-0161312-2. 4		16	13	2.4	12	60	75	0	2.6	3.3	8.0	1.5	8.7
LSV-0201712-1. 2		20	17	1.2	12°	60°	60°	0	3.9	4.9	8.0	1.5	10.4
LSV-0201712-1. 3		20	17	1.3	12°	60°	60°	0	3.9	4.9	8.0	1.5	10.4
LSV-0201712-1. 4		20	17	1.4	12°	60°	60°	0	3.9	5.7	8.0	1.5	10.4
LSV-0201712-1. 5		20	17	1.5	12°	60°	60°	0	3.9	5.7	8.0	1.5	10.4
LSV-0201712-1. 6		20	17	1.6	12°	60°	60°	0	3.9	5.7	8.0	1.5	10.4
LSV-0201712-1. 7		20	17	1.7	12°	60°	60°	0	3.9	5.7	8.0	1.5	10.4
LSV-0201712-1. 8		20	17	1.8	12°	60°	60°	0	3.1	5.7	8.0	1.5	10.4
LSV-0201712-2. 0		20	17	2.0	12°	60°	60°	0	3.1	7.0	8.0	1.5	10.4
LSV-0201712-2. 2		20	17	2.2	12°	60°	60°	0	3.1	7.0	8.0	1.5	10.4
LSV-0201712-2. 4		20	17	2.4	12°	60°	60°	0	3.1	7.0	8.0	1.5	10.4
LSV-0201712-2. 6		20	17	2.6	12°	60°	60°	0	3.1	7.0	8.0	1.5	10.4
LSV-0201712-2. 9		20	17	2.9	12°	60°	60°	0	3.1	7.0	8.0	1.5	10.4
LSV-0201712-3. 2		20	17	3.2	12°	60°	60°	0	3.1	6.4	8.0	1.5	12.3
LSV-0201712-3. 4		20	17	3.4	12°	60°	60°	0	3.1	6.4	8.0	1.5	12.3
LSV-0201712-3. 6		20	17	3.6	12°	60°	60°	0	3.1	6.4	8.0	1.5	12.3
LSV-0201712-4. 0		20	17	4.0	12°	60°	60°	0	3.1	6.4	8.0	1.5	12.3
LSV-0201712-4. 4		20	17	4.4	12°	60°	60°	0	3.1	7.2	8.0	1.5	12.3
LSV-0201712-5. 0		20	17	5.0	12°	60°	60°	0	3.1	7.2	8.0	1.5	12.3

**LSV 型** 拉制金属钢帘线线材模坯 Type LSV Wire die for drawing metal steel cord

新型号 New Type	原型号 Old Type	Dimension (mm) 基本尺寸			Reference dimension(mm) 参考尺寸								
		D	H	d	2a°	2β°	2r°	h	h1	R	e	D1	

LSV-0161312-0.8-1°		16	13	0.8	12	60	80	0	2.4	6	0.5	10.4
LSV-0161312-1.0-1°		16	13	1.0	12	60	80	0	2.4	6	0.5	10.4
LSV-0161312-1.2-1°		16	13	1.2	12	60	80	0	2.4	6	0.5	10.4
LSV-0161312-1.3-1°		16	13	1.3	12	60	80	0	2.4	6	0.5	10.4
LSV-0161312-1.6-1°		16	13	1.6	12	60	80	0	2.4	6	0.5	10.4
LSV-0161312-1.8-1°		16	13	1.8	12	60	80	0	2.4	6	0.5	10.4
LSV-0161312-2.0-1°		16	13	2.0	12	60	80	0	2.4	6	0.5	10.4
LSV-0161312-2.4-1°		16	13	2.4	12	60	80	0	2.4	6	0.5	10.4
LSV-0161312-2.5-1°		16	13	2.5	12	60	80	0	2.4	6	0.5	10.4
LSV-0221814-2.9-1°		22	18	2.9	14	60	60	0	3.2	0	0.5	13.4
LSV-0221814-3.0-1°		22	18	3	14	60	60	0	3.2	0	0.5	13.5
LSV-0221814-4.0-1°		22	18	4	14	60	60	0	3.2	0	0.5	14.5
LSV-0221814-4.2-1°		22	18	4.2	14	60	60	0	3.2	0	0.5	14.7

**LSV1** 控制金属钢帘线线材模坯 Wire die for drawing metal steel cord

新型号 New Type	原型号 Old Type	Dimension (mm) 基本尺寸					Reference dimension(mm) 参考尺寸	
		D	H	d	2α°	2γ°	h	h <sub>1</sub>
LSV1-0121108-1.45	LSV-0121108-1.45	12.7	11.4	1.45	8	90	0	0.5
LSV1-0121108-1.70	LSV-0121108-1.70	12.7	11.4	1.70	8	90	0	0.6
LSV1-0121108-2.15	LSV-0121108-2.15	12.7	11.4	2.15	8	90	0	0.6
LSV1-0121108-2.90	LSV-0121108-2.90	12.7	11.4	2.90	8	90	0	0.6

**高速拉丝线材拉伸模坯型号** The type of drawing die for express drawing wire

**GS1** 控制高速拉丝线材模坯 Wire die for drawing express wire

新型号 New Type	Dimension (mm) 基本尺寸					Reference dimension(mm) 参考尺寸					
	D	H	d	H	h <sub>1</sub>	h <sub>2</sub>	2α°	2γ°	R	D <sub>1</sub>	e
GS1-0120812-0.9	12	8.0	0.9	0	2.0	2.5	12°	90°	6	9.0	1.0
GS1-0120812-1.0	12	8.0	1.0	0	2.0	2.5	12°	90°	6	9.0	1.0
GS1-0120812-1.1	12	8.0	1.1	0	2.0	2.5	12°	90°	6	9.0	1.0
GS1-0120812-1.2	12	8.0	1.2	0	2.0	2.5	12°	90°	6	9.0	1.0
GS1-0120812-1.5	12	8.0	1.5	0	2.0	2.5	12°	90°	6	9.0	1.0
GS1-0120812-1.6	12	8.0	1.6	0	2.0	2.5	12°	90°	6	9.0	1.0
GS1-0120812-1.7	12	8.0	1.7	0	2.0	2.5	12°	90°	6	9.0	1.0

**GS2** 控制高速拉丝线材模坯 Wire die for drawing express wire

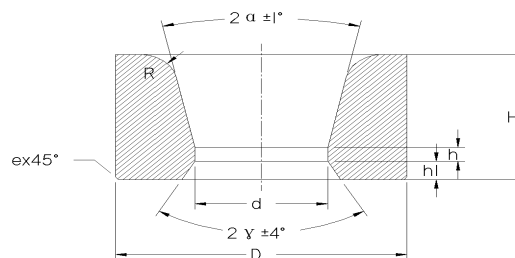
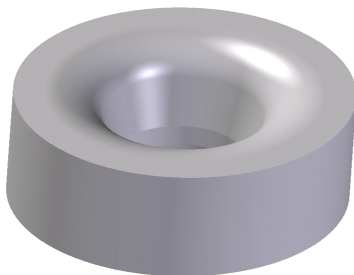


新型号 New Type	Dimension (mm) 基本尺寸				Reference dimension(mm) 参考尺寸										
	D	H	d	h	h1	h2	R1	R2	D1	2α°	2β°	2γ°	D1	e	
GS2-0161312-0.8	16	13	0.8	≤0.1	3.0	4.5	8	3.5	9.0	12°	60°	75°	2.5	1.1	
GS2-0161312-1.0	16	13	1.0	≤0.1	2.7	5.0	8	3.5	9.0	12°	60°	75°	2.5	1.1	
GS2-0161312-1.2	16	13	1.2	≤0.1	2.7	5.0	8	3.5	9.0	12°	60°	75°	2.5	1.1	
GS2-0161312-1.4	16	13	1.4	≤0.1	2.6	5.0	8	3.5	9.0	12°	60°	75°	2.5	1.1	
GS2-0161312-1.6	16	13	1.6	≤0.1	2.6	5.0	8	3.5	9.0	12°	60°	75°	2.5	1.1	
GS2-0161312-1.8	16	13	1.8	≤0.1	2.5	5.5	8	3.5	9.5	12°	60°	75°	2.5	1.1	
GS2-0161312-2.0	16	13	2.0	≤0.1	2.5	5.5	8	3.5	9.5	12°	60°	75°	2.5	1.1	
GS2-0161312-2.2	16	13	2.2	≤0.1	2.5	5.5	8	3.5	9.5	12°	60°	75°	2.5	1.1	
GS2-0161312-2.4	16	13	2.4	≤0.1	2.5	5.5	8	3.5	9.5	12°	60°	75°	2.5	1.1	
GS2-0201712-1.3	20	17	1.3	0.4	3.9	4.5	8.0	6.0	11.5	12°	60°	60°	3.0	1.2	
GS2-0201712-1.6	20	17	1.6	0.4	3.6	4.6	8.0	6.0	11.5	12°	60°	60°	3.0	1.2	
GS2-0201712-1.8	20	17	1.8	0.4	3.4	4.8	8.0	6.0	11.5	12°	60°	60°	3.0	1.2	
GS2-0201712-2.0	20	17	2.0	0.5	3.3	5.0	8.0	6.0	11.5	12°	60°	60°	3.0	1.2	
GS2-0201712-2.2	20	17	2.2	0.5	3.3	5.1	8.0	6.0	12.0	12°	60°	60°	3.0	1.2	
GS2-0201712-2.4	20	17	2.4	0.5	3.1	5.2	8.0	6.0	12.0	12°	60°	60°	3.0	1.2	
GS2-0201712-2.6	20	17	2.6	0.6	3.0	5.5	8.0	6.0	12.0	12°	60°	60°	3.0	1.2	
GS2-0201712-2.7	20	17	2.7	0.6	3.0	5.5	8.0	6.0	12.0	12°	60°	60°	3.0	1.2	
GS2-0201712-2.9	20	17	2.9	0.6	2.8	5.8	8.0	6.0	12.0	12°	60°	60°	3.0	1.2	
GS2-0201712-3.2	20	17	3.2	0.6	2.8	6.0	8.0	6.0	12.0	12°	60°	60°	3.0	1.2	

### 金属棒材拉伸模坯型号 The type of carbide drawing dies for drawing metal rods

**S13 型 拉制金属棒材模坯** Drawing die for drawing metal rods

**Type S13**



新型号 New Type	原型号 Old Type	Dimension (mm) 基本尺寸					Reference dimension(mm) 参考尺寸				
		D	H	d	2α	2γ	h	h1	R	e	
S13-0251820-8.3		25	18	8.3	20°	60°	4.0	2.5	2	2.5	
S13-0251820-6.2		25	18	6.2	20°	60°	4.0	2.5	5	2.5	
S13-0261720-7.0		26	17	7.0	20°	60°	2.5	3.0	12	1.5	
S13-0261720-7.6		26	17	7.6	20°	60°	2.5	3.0	10	1.5	

S13-0261720-7.3		26	17	7.3	20°	60°	2.5	2.4	12	1.0
S13-0261720-9.0		26	17	9.0	20°	60°	2.5	3.0	12	1.5
S13-0261720-9.3		26	17	9.3	20°	60°	2.5	2.4	12	1.0
S13-0261720-9.6		26	17	9.6	20°	60°	2.5	2.4	12	1.0
S13-0271718-4.2DH		26.7	17.5	4.2	18°	60°	2.5	3	6	1.5
S13-0271718-4.7DH		26.7	17.5	4.7	18°	60°	2.5	3	6	1.5
S13-0271718-5.2DH		26.7	17.5	5.2	18°	60°	2.5	3	6	1.5
S13-0271718-5.7DH		26.7	17.5	5.7	18°	60°	2.5	3	6	1.5
S13-0271718-6.2DH		26.7	17.5	6.2	18°	60°	2.5	3	6	1.5
S13-0271718-6.7DH		26.7	17.5	6.7	18°	60°	2.5	3	6	1.5
S13-0271718-7.2DH		26.7	17.5	7.2	18°	60°	3.5	3	6	1.5
S13-0271718-7.7DH		26.7	17.5	7.7	18°	60°	3.5	3	6	1.5
S13-0271718-8.2DH		26.7	17.5	8.2	18°	60°	3.5	3	6	1.5
S13-0271718-8.6DH		26.7	17.5	8.6	18°	60°	3.5	3	6	1.5
S13-0271718-9.2DH		26.7	17.5	9.2	18°	60°	3.5	3	6	1.5
S13-0271718-9.6DH		26.7	17.5	9.6	18°	60°	3.5	3	6	1.5
S13-0271718-10.0D H		26.7	17.5	10	18°	60°	3.5	3	6	1.5
S13-0271718-10.5D H		26.7	17.5	10.5	18°	60°	3.5	3	6	1.5
S13-0281820-5.7	S13-5.7-28H	28	18	5.7	20°	60°	2.5	3.0	9.0	1.2
S13-0281820-6.0		28	18	6.0	20°	60°	2.5	3.0	9.0	1.2
S13-0281820-6.3		28	18	6.3	20°	60°	2.5	3.0	9.0	1.2
S13-0281820-6.6		28	18	6.6	20°	60°	2.5	3.0	8.5	1.2
S13-0281820-7.0		28	18	7.0	20°	60°	2.5	3.0	8.5	1.2
S13-0281820-7.3		28	18	7.3	20°	60°	2.5	3.0	8.5	1.2
S13-0282020-4.7	LS13-4.7	28	20	4.7	20°	60°	2.5	3.0	7.0	1.2
S13-0282210-4.8	LS13-4.8A	28	22	4.8	10°	60°	2.0	3.5	6.0	1.2
S13-0282020-5.0		28	20	5.0	20°	60°	2.5	3.0	7.0	1.2
S13-0282020-5.2	XS13-5.2-28F	28	20	5.2	20°	60°	2.5	3.0	7.0	1.2
S13-0282210-5.2	LS13-5.2A	28	22	5.2	10°	60°	2.2	3.5	6.0	1.2
S13-0282020-5.4	S13-5.4-28	28	20	5.4	20°	60°	2.5	3.0	7.0	1.2
S13-0282020-5.7	LS13-5.7A	28	20	5.7	20°	60°	2.5	3.0	7.0	1.2
S13-0282020-6.0		28	20	6.0	20°	60°	2.5	3.0	7.0	1.2
S13-0282020-6.2	LS13-6.2-28F	28	20	6.2	20°	60°	2.5	3.0	7.0	1.2
S13-0282020-6.5	S13-6.5-28	28	20	6.5	20°	60°	2.5	3.0	7.0	1.2
S13-0282020-6.7	LS13-6.7A	28	20	6.7	20°	60°	2.5	3.0	7.0	1.2
S13-0282020-7.0	LS13-7.0-28AB	28	20	7.0	20°	60°	3.5	2.5	8.0	1.2
S13-0282020-7.3		28	20	7.3	20°	60°	3.0	3.0	7.0	1.2
S13-0282020-7.7	LS13-7.7-28	28	20	7.7	20°	60°	3.5	3.0	7.0	1.2
S13-0282020-8.5	LS13-8.5-28AB	28	20	8.5	20°	60°	4.5	2.5	10.0	1.2
S13-0282026-8.5	LS13-8.5-28AB	28	20	8.5	26°	60°	4.5	2.5	10.0	1.2
S13-0282020-8.6	LS13-8.6-28	28	20	8.6	20°	60°	3.5	3.0	7.0	1.2

S13-0282020-9.9	LS13-9.9-28AB	28	20	9.9	20°	60°	5.0	2.5	9.5	1.2
S13-0282028-9.9	LS13-9.9-28AB	28	20	9.9	28°	60°	5.0	2.5	9.5	1.2
S13-0282020-9.6	LS13-9.6-28	28	20	9.6	20°	60°	4.0	3.0	7.0	1.2
S13-0302120-5.4	LS13-5.4	30	21	5.4	20°	60°	2.5	3.0	7.0	1.2
S13-0302120-5.7	LS13-5.7	30	21	5.7	20°	60°	2.5	3.0	7.0	1.2
S13-0302120-6.0	LS13-6.0	30	21	6.0	20°	60°	2.5	3.0	7.0	1.2
S13-0302120-6.2	S13-6.2	30	21	6.2	20°	60°	2.5	3.0	7.0	1.2
S13-0302120-6.5	LS13-6.5	30	21	6.5	20°	60°	2.5	3.0	7.0	1.2
S13-0302120-6.7	LS13-6.7	30	21	6.7	20°	60°	2.5	3.0	7.0	1.2
S13-0302120-7.0	LS13-7.0	30	21	7.0	20°	60°	2.5	3.0	7.0	1.2
S13-0302120-7.3	LS13-7.3	30	21	7.3	20°	60°	3.5	3.0	7.0	1.2
S13-0302120-7.7	LS13-7.7	30	21	7.7	20°	60°	3.5	3.0	7.0	1.2
S13-0302120-8.1	LS13-8.1	30	21	8.1	20°	60°	3.5	3.0	7.0	1.2
S13-0302120-8.6	LS13-8.6	30	21	8.6	20°	60°	3.5	3.0	7.0	1.2
S13-0302120-9.0	LS13-9.0	30	21	9.0	20°	60°	4.0	3.0	7.0	1.2
S13-0302116-9.1	13-9.1	30	21	9.1	16°	60°	3.0	3.0	7.0	1.5
S13-0302120-9.6	LS13-9.6	30	21	9.6	20°	60°	4.0	3.0	7.0	1.2
S13-0302118-10.0	S13-10	30	21	10.0	18°	60°	3.5	3.0	7.0	1.5
S13-0302116-10.1	13-10.1	30	21	10.1	16°	60°	3.5	3.0	7.0	1.5
S13-0282021-10.5	LH-112	33	23	10.5	21°	60°	4.0	3.0	9.0	14
S13-0332321-11.5	LH-113	33	23	11.5	21°	60°	4.0	3.0	9.0	14
S13-0332321-12.5	LH-114	33	23	12.5	21°	60°	4.0	3.0	9.0	14
S13-0332321-13.5	LH-115	33	23	13.5	21°	60°	4.0	3.0	9.0	14
S13-0332321-14.5	LH-116	33	23	14.5	21°	60°	4.0	3.0	9.0	14
S13-0352420-6.7	LS13-6.7-35	35	24	6.7	20°	60°	5.0	4.0	7.0	1.5
S13-0352420-9.6	LS13-9.6-35	35	24	9.6	20°	60°	5.0	4.0	7.0	1.5
S13-0352420-10.0	LS13-10-35F	35	24	10.0	20°	60°	5.0	4.0	7.0	1.5
S13-0352420-11.5	LS13-11-35F	35	24	11.5	20°	60°	5.0	4.0	7.0	1.5
S13-0352420-12.5	LS13-12-35F	35	24	12.5	20°	60°	5.0	4.0	7.0	1.5
S13-0372220-12.5H R7		37	22.5	12.5	20°	60°	5.0	4.0	7.0	1.5
S13-0372220-13.5H R7		37	22.5	13.5	20°	60°	5.0	4.0	7.0	1.5
S13-0372220-14.5H R7		37	22.5	14.5	20°	60°	5.0	4.0	7.0	1.5
S13-0372220-15.5H R7		37	22.5	15.5	20°	60°	5.0	4.0	7.0	1.5
S13-0372220-10.5H		37	22.5	10.5	20°	60°	5.0	4.0	10.3	1.5
S13-0372220-11.5H		37	22.5	11.5	20°	60°	5.0	4.0	10.3	1.5
S13-0372220-12.5H		37	22.5	12.5	20°	60°	5.0	4.0	10.3	1.5
S13-0372220-13.5H		37	22.5	13.5	20°	60°	5.0	4.0	10.3	1.5
S13-0372220-14.5H		37	22.5	14.5	20°	60°	5.0	4.0	10.3	1.5
S13-0372220-15.5H		37	22.5	15.5	20°	60°	5.0	4.0	10.3	1.5

S13-0382420-10.5	LS13-10-38	38	24	10.5	20°	60°	4.0	4.0	7.0	1.5
S13-0382421-10.5	LS13-10-38AB	38	24	10.5	21°	60°	4.0	4.0	14.0	1.5
S13-0382423-10.5	LS13-10.5-38AB	38	24	10.5	23°	60°	5.0	3.5	11.0	1.5
S13-0382420-11.5	LS13-11-38	38	24	11.5	20°	60°	4.0	4.0	7.0	1.5
S13-0382421-11.5	LS13-11-38AB	38	24	11.5	21°	60°	4.0	4.0	14.0	1.5
S13-0382423-11.5	LS13-11.5-38AB	38	24	11.5	23°	60°	5.0	3.5	14.0	1.5
S13-0382428-11.9	LS13-11.9-38AB	38	24	11.9	28°	60°	5.5	3.5	14.0	1.5
S13-0382420-12.5	LS13-12-38	38	24	12.5	20°	60°	4.0	4.0	7.0	1.5
S13-0382421-12.5	LS13-12-38AB	38	24	12.5	21°	60°	4.0	4.0	9.5	1.5
S13-0382423-12.5	LS13-12.5-38AB	38	24	12.5	23°	60°	5.0	3.5	14.0	1.5
S13-0382420-13.5	LS13-13-38	38	24	13.5	20°	60°	4.5	4.0	7.0	1.5
S13-0382421-13.5	LS13-13-38AB	38	24	13.5	21°	60°	4.0	4.0	14.0	1.5
S13-0382423-13.5	LS13-13.5-38AB	38	24	13.5	23°	60°	5.0	3.5	14.0	1.5
S13-0382420-14.5	LS13-14-38F	38	24	14.5	20°	60°	5.0	4.0	7.0	1.5
S13-0382421-14.5	LS13-14-38AB	38	24	14.5	21°	60°	4.0	4.0	14.0	1.5
S13-0382423-14.5	LS13-14.5-38AB	38	24	14.5	23°	60°	5.0	3.5	11.0	1.5
S13-0382420-15.5	LS13-15-38	38	24	15.5	20°	60°	4.5	4.0	7.0	1.5